

ANC Meeting July 6, 2016



American University Campus Plan Modification

Amended Request for a Modification of an Approved Condition of
the American University Campus Plan – Zoning Commission
Order No. 11-07



Until the start of the fall **2017** semester, the University shall maintain a supply of housing sufficient to make housing available for 85% of its full-time freshman and sophomore students and for **61%** of all full-time undergraduates. All of the freshman and sophomore housing and **58%** of the housing for full-time undergraduates shall be located entirely on campus. By the start of the fall **2017** Semester, the University shall maintain a supply of on campus housing sufficient to make housing available for 100% of its full-time freshman and sophomore students and for 67% of all full-time undergraduates. Nothing in this condition is intended to preclude the University from continuing to house undergraduate students who are not freshmen or sophomores off-campus after the fall **2017** semester begins; provided that the University maintains the minimum percentage of on-campus housing required. (***Proposed changes in bold and italics.***)

AU Housing Summary - Fall 2016



	Fall 2016
Existing Capacity	3,549
Changes	
<i>Discontinue Tenley</i>	<i>(497)</i>
<i>Nebraska Hall Addition</i>	<i>150</i>
<i>North Hall (Cassell Hall)</i>	<i>360</i>
<i>East Campus</i>	
Net New On-Campus	13
Triples	330
University Provided Off-Campus	240
New Capacity	4,132
F/T Undergraduate Enrollment	6,730
F/T Percent UG Housed On-Campus	58%
F/T Percent UG Housed AU-Provided	61%

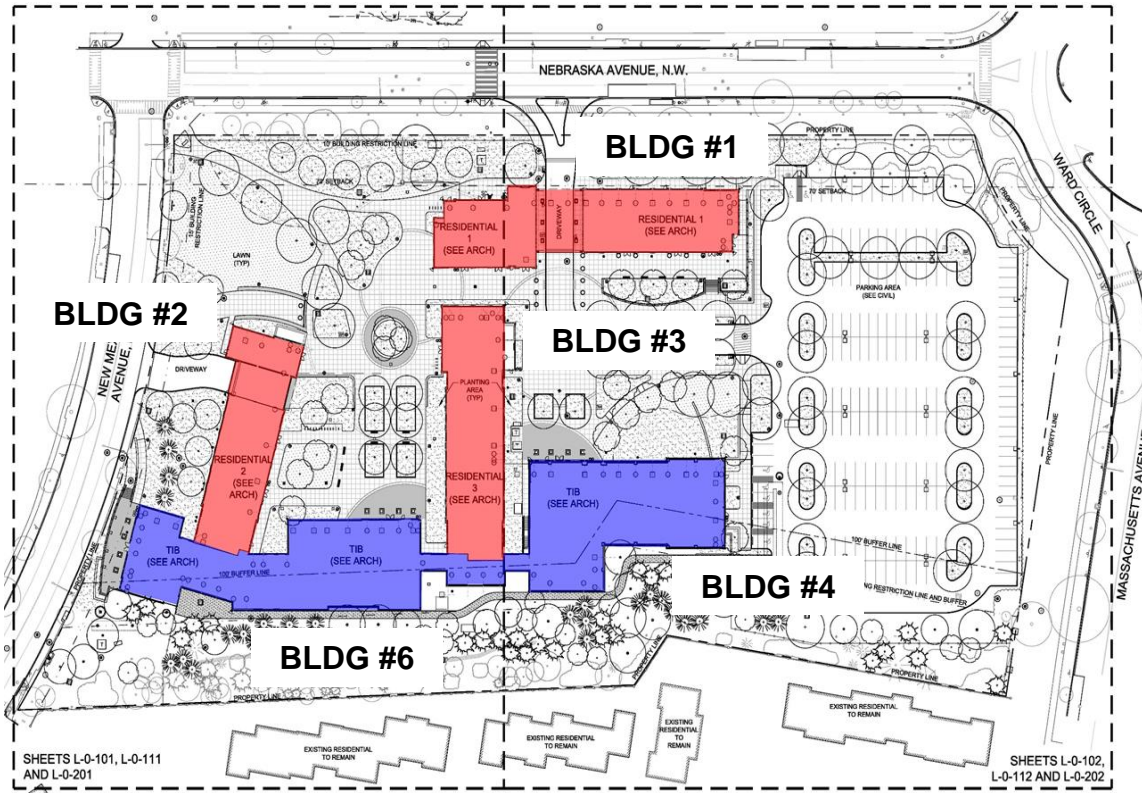
Notes:

1 Berkshire Apts. - Master Lease

2 Projected

American University Campus Plan Modification

East Campus Progress Update



RESIDENTIAL

Building # 1 Constitution Hall (281 beds)

- Exterior forecasted completion Aug 2016
- Interior forecasted completion Jan 2017
- Forecasted occupancy Feb 2017

Building # 2 Congressional Hall (134 beds)

- Exterior forecasted completion June 2016
- Interior forecasted completion Oct 2016
- Forecasted occupancy Nov 2016

Building # 3 Federal Hall (175 beds)

- Exterior forecasted completion Jul 2016
- Interior forecasted completion Nov 2016
- Forecasted occupancy Dec 2016

BUFFER BUILDINGS

Building # 4 & 6 Teaching & Innovation Building

- Exterior forecasted completion Aug 2016
- Interior forecasted completion Feb 2017
- Forecasted occupancy Mar 2017

SITE

- Sitework and Utilities forecasted completion Sep 2016
- Landscaping forecasted completion Oct 2016

East Campus Progress Photos



Buildings 1, 2 and 3

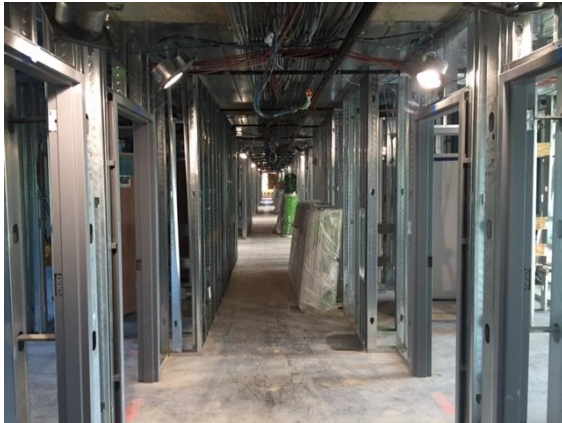


Buildings 4 and 6, Entry Courtyard



American University Campus Plan Modification

East Campus Progress Photos



Buildings 1, 2 and 3

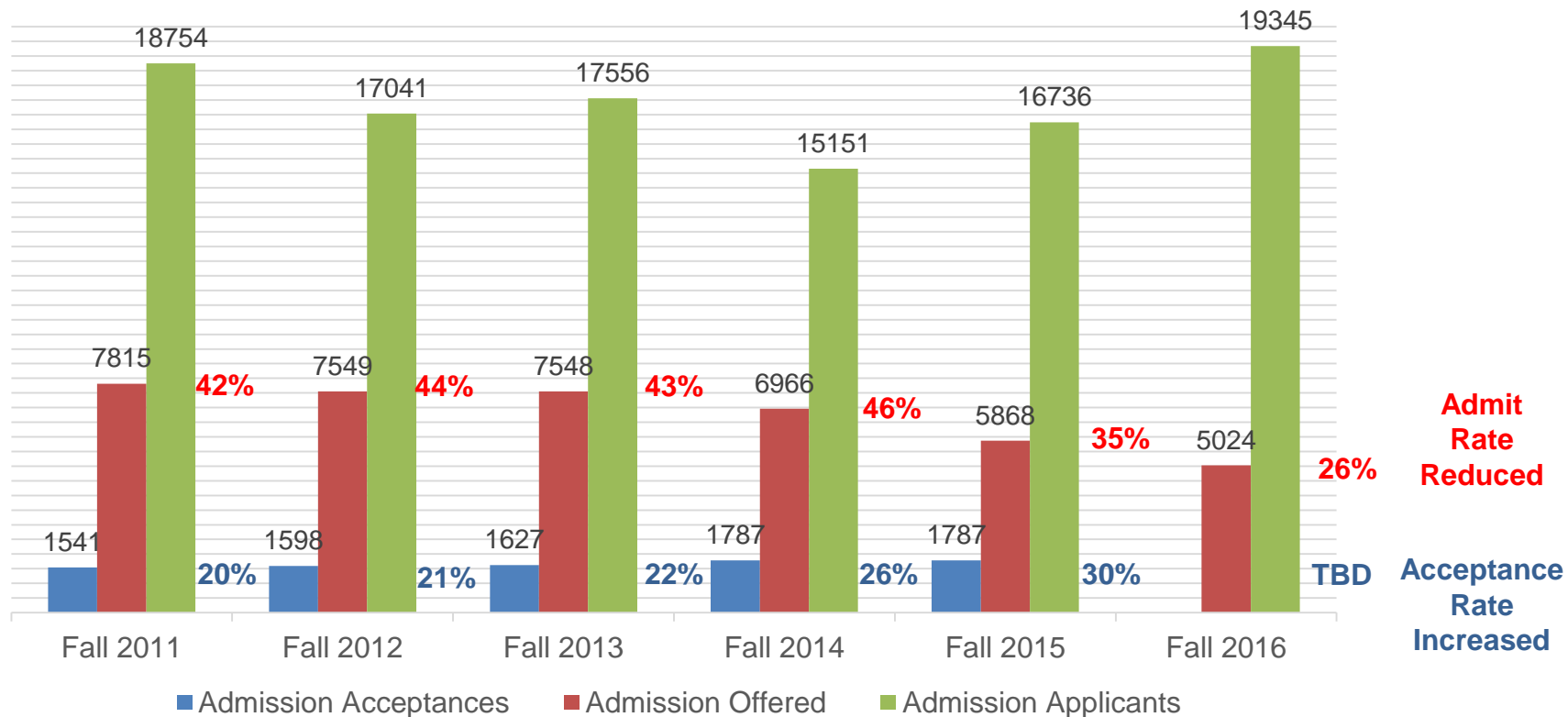


Buildings 4 and 6



American University Campus Plan Modification

Freshman Admission History



- Admission applications have increased by 4,194 or 28% over the past three years
- Admission offers have been decreased by 1,942 or 39% over the past three years
- Admission acceptances have increased by 246 or 14% over the past five years

American University Campus Plan Modification

2011 Campus Plan - Housing Summary and Projections

	Fall 2011	Fall 2012	Fall 2013	Fall 2014	Fall 2015	Fall 2016	Fall 2017	Fall 2018	Fall 2019	Fall 2020
Existing Capacity	3,549	3,549	3,549	3,549	3,549	3,549	3,549	3,549	3,549	3,549
Changes										
Discontinue Tenley			(497)	(497)	(497)	(497)	(497)	(497)	(497)	(497)
Nebraska Hall Addition			150	150	150	150	150	150	150	150
North Hall			360	360	360	360	360	360	360	360
East Campus						590	590	590	590	590
South Hall								200	200	200
Net New On-Campus			13	13	13	603	603	803	803	803
Triples	130	200	200	200	200	150	150	50	50	50
University Provided Off-Campus	200	200	200	200	200					
New Capacity	3,879	3,949	3,962	3,962	3,962	4,302	4,302	4,402	4,402	4,402
F/T Undergraduate Enrollment	6,343	6,400	6,400	6,400	6,400	6,400	6,400	6,400	6,400	6,400
F/T Percent UG Housed On-Campus	58%	59%	59%	59%	59%	67%	67%	69%	69%	69%
F/T Percent UG Housed AU-Provided	61%	62%	62%	62%	62%	67%	67%	69%	69%	69%
Current - Housing Summary and Projections										
	Fall 2011	Fall 2012	Fall 2013	Fall 2014	Fall 2015	Fall 2016	Fall 2017	Future	Future	Future
Existing Capacity	3,549	3,549	3,549	3,549	3,549	3,549	3,549	3,549	3,549	3,549
Changes										
Discontinue Tenley			(497)	(497)	(497)	(497)	(497)	(497)	(497)	(497)
Nebraska Hall Addition			150	150	150	150	150	150	150	150
North Hall			360	360	360	360	360	360	360	360
East Campus						590	590	590	590	590
South Hall								200	200	200
Net New On-Campus			13	13	13	603	603	803	803	803
Triples	130	176	215	325	330	330	290	10	-	-
University Provided Off-Campus	200	200	200	200	200			-		
New Capacity	3,879	3,925	3,977	4,087	4,092	4,482	4,442	4,362	4,352	4,352
F/T Undergraduate Enrollment	6,116	6,133	6,291	¹ 6,509	² 6,727	³ 6,730	6,670	6,557	6,490	6,440
F/T Percent UG Housed On-Campus	60%	61%	60%	60%	58%	* 67%	67%	67%	67%	68%
F/T Percent UG Housed AU-Provided	63%	64%	63%	63%	61%	67%	67%	67%	67%	68%

Admit Rates

¹ 46%

² 35%

³ 25.7%

* Based on assumption that East Campus beds occupied by start of fall 2016 semester.