



WMC AMERICAN UNIVERSITY EAST CAMPUS  
SITE PLAN RENDERING  
05.13.2014

L01

# American University East Campus Community Meeting September 17, 2015

# Agenda

- I. Project Status Update
- II. 6-Month Look Ahead
- III. Saturday work
- IV. Q & A

# Status update

- Geo-pier installation nearing completion
- Below grade structure installation has commenced
- Offsite facade pre-fabrication has commenced
- Site utilities have commenced

# Status update



Below grade structure



# Status update



Below grade structure

# Status update



Façade prefabrication

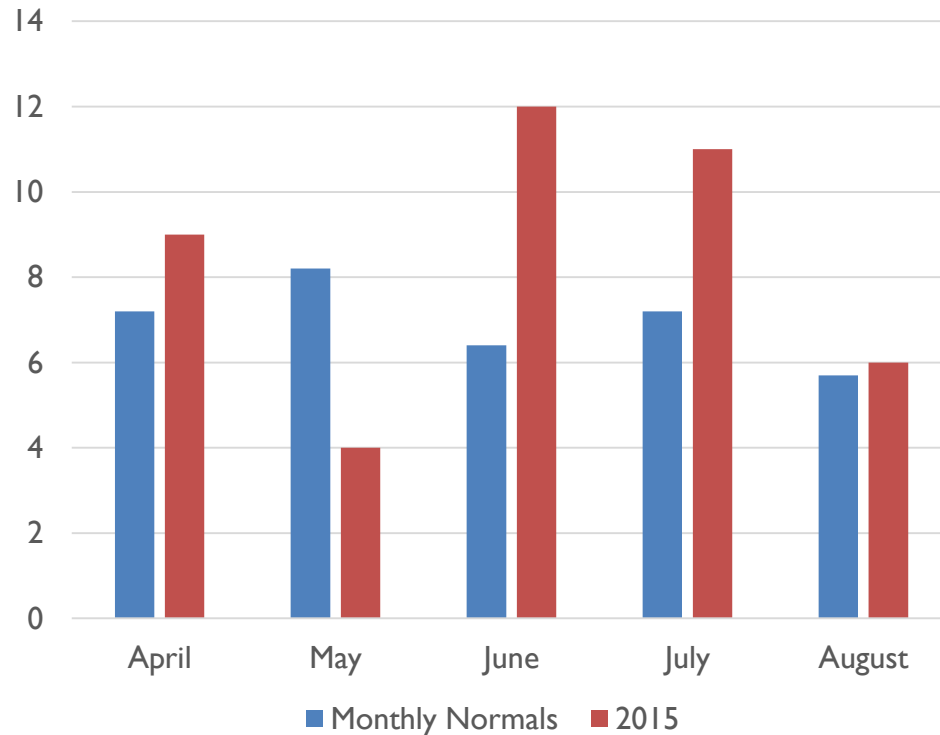
# Look Ahead

East Campus Project						
Six Month Look-Ahead Schedule						
Phase	2015				2016	
	September	October	November	December	January	February
Offsite - Precast façade fabrication	[Active]					
Foundations & Garage Structure	[Active]					
Below slab utilities	[Active]					
Above grade structure		[Active]				
Precast façade Installation				[Active]		
Interior MEP			[Active]			



# Saturday Work

Daily Precipitation (days)



- 11.2 days of precipitation more than normal
- 6.01 total inches of precipitation more than normal
- 33 total work days impacted by precipitation
- 44 Saturdays remaining in the schedule

Source: NOAA Dalecarlia Reservoir Observation Station



# Precipitation impact on work



April 2015



May 2015



June 2015



July 2015



August 2015

# Remaining Schedule

**American University - East Campus Project**  
**Remaining Schedule**

**Legend:**

- Exterior work activities potentially impacted by weather
- Interior work activities not impacted by weather
- Revised completion date of task

Task	2015												2016									
	Feb	Mar	Apr	May	Jun	Jul	Aug	Sep	Oct	Nov	Dec	Jan	Feb	Mar	Apr	May	Jun	Jul	Aug	Sep	Oct	
# of work days (excluding Saturday)	21	23	22	21	22	23	21	22	22	21	23	21	21	23	21	22	22	21	23	25	27	
# of work days with precipitation	na	na	8	3	9	9	4	0	0	0	0	0	0	0	0	0	0	0	0	0	0	
Precip days as a % of work days	#####	#####	36%	14%	41%	39%	19%	0%	0%	0%	0%	0%	0%	0%	0%	0%	0%	0%	0%	0%	0%	
<b>Below Grade Structure</b>																						
Excavation																						
Geo-piers																						
Concrete																						
Site Utilities																						
<b>Building 6</b>																						
Above ground structure																						
Interior work (rough-in and finishes)																						
Enclosure/Envelope																						
<b>Building 4</b>																						
Above ground structure																						
Interior work (rough-in and finishes)																						
Enclosure/Envelope																						
<b>Building 2</b>																						
Above ground structure																						
Interior work (rough-in and finishes)																						
Enclosure/Envelope																						
<b>Building 1</b>																						
Above ground structure																						
Interior rough-in and finishes																						
Enclosure/Envelope																						
<b>Building 3</b>																						
Above ground structure																						
Interior work (rough-in and finishes)																						
Enclosure/Envelope																						
<b>Fixture, Furniture &amp; Equipment</b>																						

# Skanska Onsite Team



**David Coleman**  
Project Executive



**Elias Bezabhe**  
Project Manager



**Steve Griffin**  
Assistant Superintendent



**Erik Henson**  
Superintendent

301-955-6296  
AUEC@skanska.com

# American University Team

**Andrew Huff**

Director of Community Relations

202.440.2221

ahuff@american.edu

**Robert van Hoek**

Senior Project Manager

202.885.1123

vanhoek@american.edu

**Onyel Bhola**

Project Coordinator

240.565.7707

onyel@american.edu

**American University  
Public Safety  
202-885-2527**



Q & A