



American University
Washington College of Law
May 15, 2015

Project Status

- **New Buildings – Nebraska and Yuma Wings**
 - Exterior brick, glass, & limestone are scheduled for completion in June
 - Mechanical and electrical rough-in continuing
 - Interior drywall under way
 - Interior painting and flooring targeted to start late-May
- **Renovation of Capital Hall and Chapel**
 - Structural repairs continuing
 - Roofing replacement starting in May
 - Mechanical and electrical rough-in continuing
 - Interior partition framing is proceeding

Site Work

- **Underground Utility Work**
 - Warren Street complete
 - Nebraska Avenue final connection to water main 3rd week of May
 - Yuma Street to start late May
- **Site Work**
 - Rough grading to start in June
 - Sidewalks, site walls, & steps to start in July
 - Landscaping September/October 2015



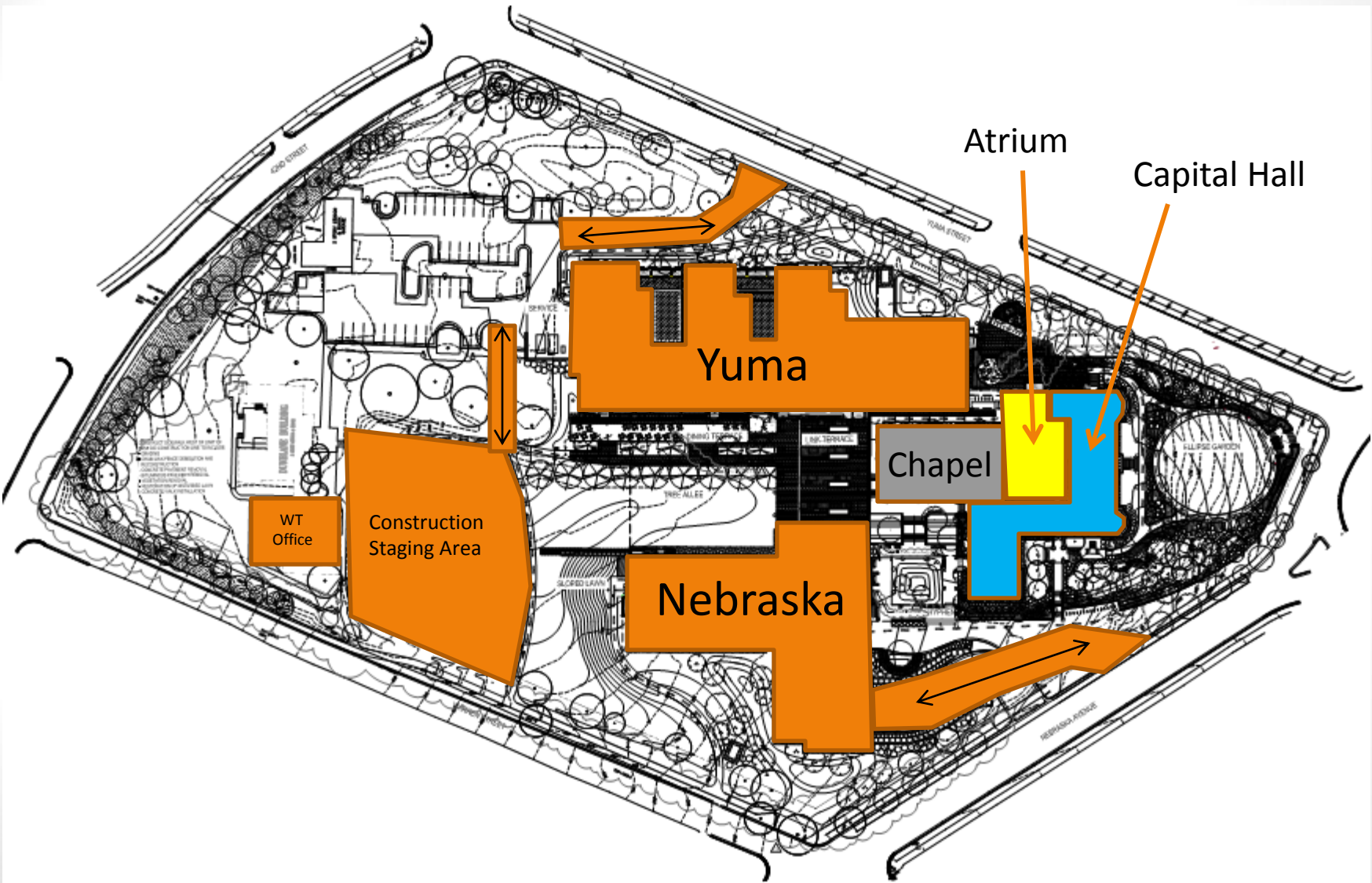




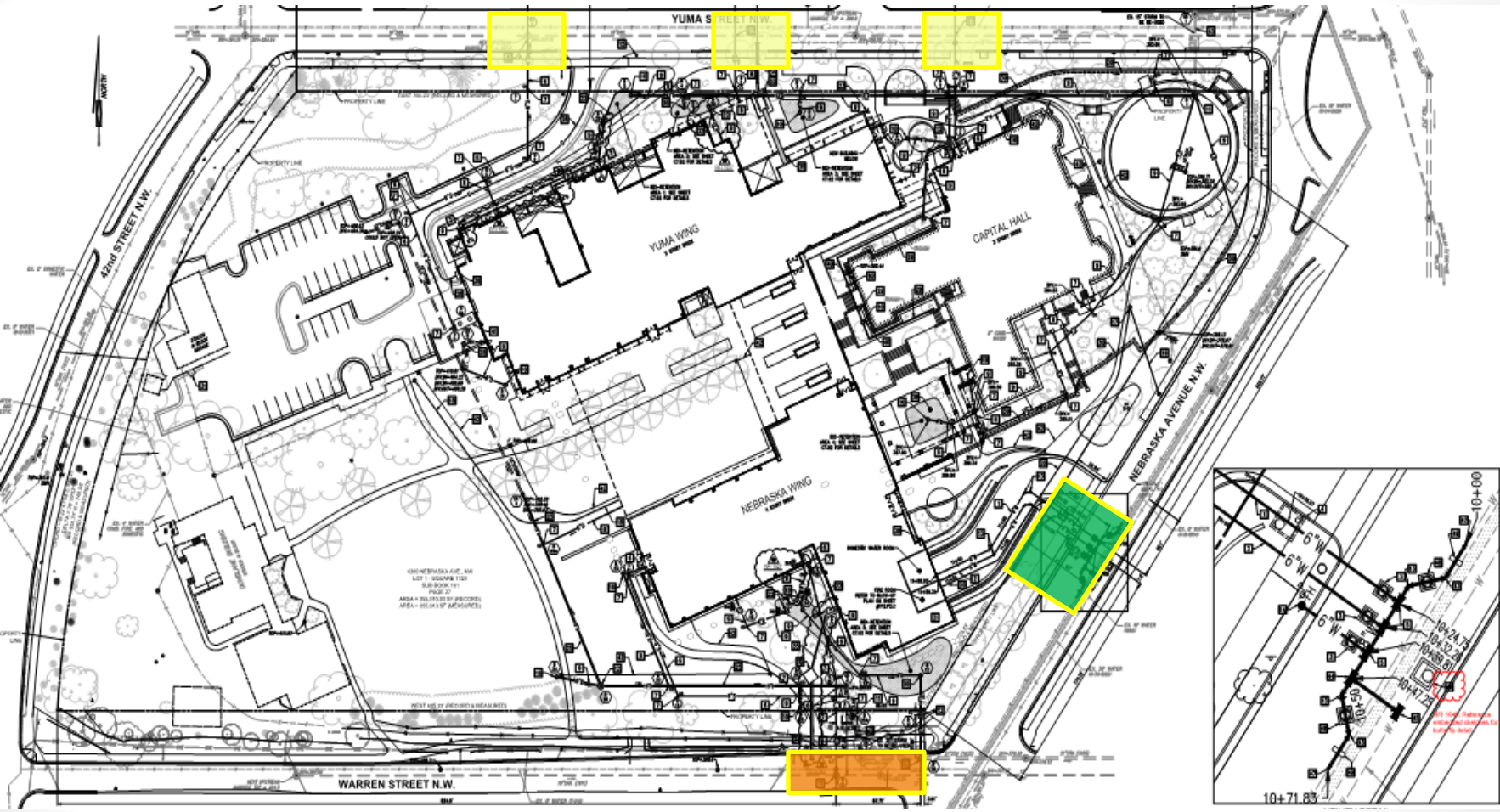





Site Plan




Utility Site Plan



 Upcoming Utility Work in Street

 In Progress Utility Work in Street

 Completed Utility Work in Street

Exterior Skin Construction

- **Yuma and Nebraska Wings**
 - State of the art rain screen exterior system – Long life and green, including brick, limestone, metal panels, and glass
- **Atrium**
 - Glass curtain wall with roof level skylight
 - Interior of Atrium incorporates the existing exterior of Capital Hall and the Chapel
- **Capital Hall & Chapel**
 - Existing exterior Limestone and Masonry remains
 - New Roof at Capital Hall
 - New Slate Roof at the Chapel

Schedule Update

- **Yuma and Nebraska Wings**
 - Complete Exterior Mid-Spring 2015
 - Complete Interior construction Early-Fall 2015
- **Capital Hall**
 - Complete Structural work Mid-Spring 2015
 - Complete Interior construction Mid-Fall 2015
- **Site work**
 - Underground Utility work Feb- May 2015
 - Complete Hardscape & landscape Mid-Fall 2015
- Project substantial completion: **late fall 2015**
- University Move-In: **November 2015 – January 2016**

Other Updates

- **Traffic Calming Circles**
 - Construction of circles complete
 - Construction of curb extensions to start in late May
 - Landscaping
- **Warren Street Sidewalk**
 - New sidewalk on north side of Warren Street
 - Construction: **summer 2015**

DDOT Planting Suggestions

- Challenging environment for plant material. No rare or hard to find ornamental trees, as they are likely to be lost to vehicle impacts.
- Combination of ornamental grasses, perennial wildflowers and flowering bulbs. The bulbs would provide early spring impact, the perennials a summer interest, and the ornamental grasses would provide 4 season structure and interest.
- Examples of plants that are known to thrive in difficult environments:
 - Northern Oats - *Chasmanthium latifolium*
 - Fountain grass - *Pennisetum alopecuroides*
 - Little Bluestem - *Schizachyrium scoparium*
 - Switchgrass - *Panicum virgatum*