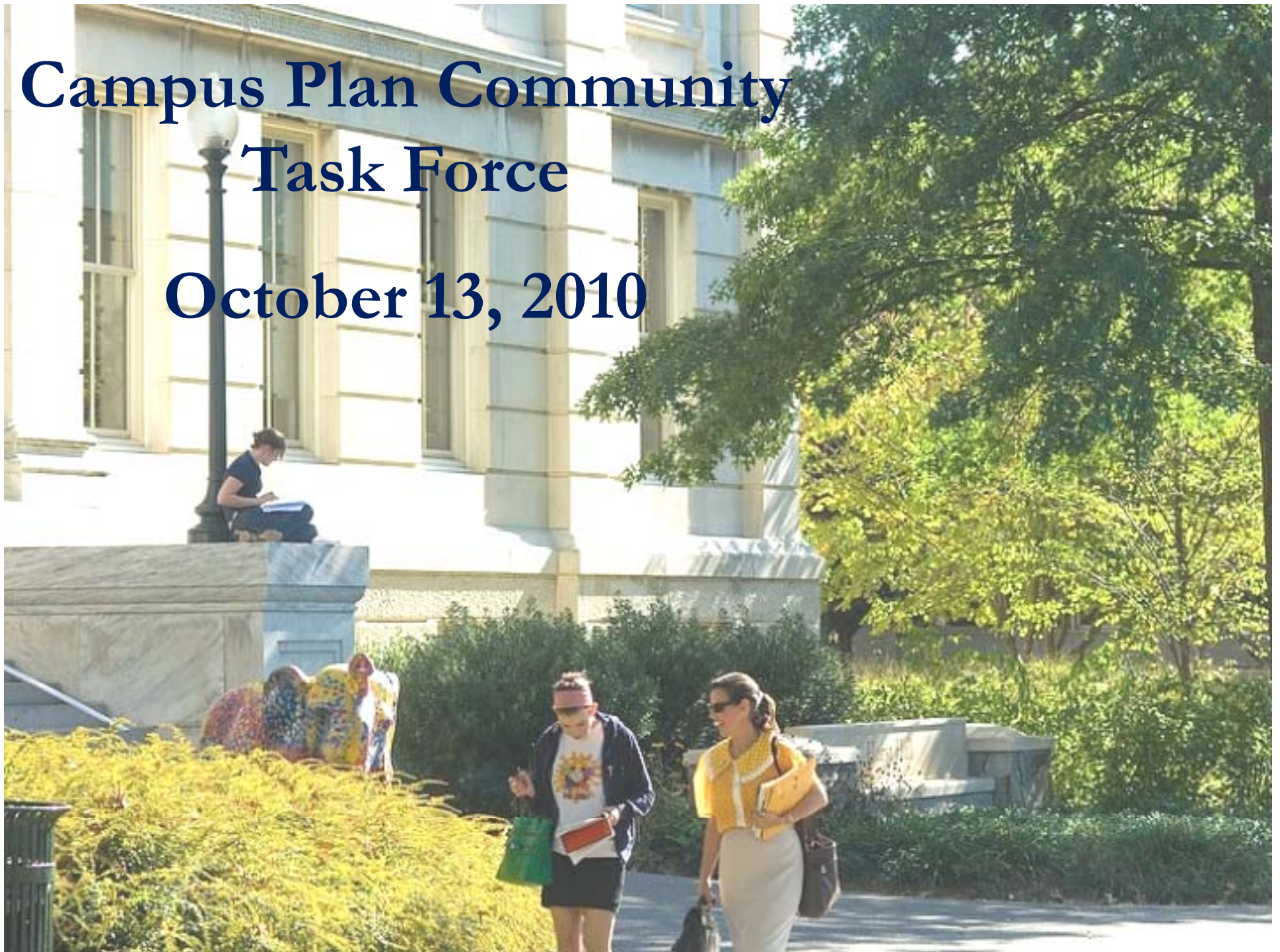


Campus Plan Community Task Force

October 13, 2010





University Requirements in Residential Districts

Two-Step Process

- Campus Plan-overall plan with general information
- Further Processing-Specific to an individual building



Campus Plan

- Required every ten years
- Shows plans for development of the campus as a whole
 - Existing and proposed improvements
 - Site location, height and bulk
- Description of effects of new development
 - Existing and planned activities
 - Vehicle and pedestrian traffic
 - Views, lighting, landscaping



Further Processing-Second Stage Review

- Specific location
- Building area
- Height
- Entrances
- Façade treatment-materials, windows
- Specific uses
- Detailed transportation study



American University
4400 Massachusetts Avenue, NW
Washington DC 20015-0200

Project
**AMERICAN UNIVERSITY
CAMPUS PLAN
2011**



McKissack McKissack
1401 New York Avenue, NW
Suite 900
Washington DC 20006

Date
October 13, 2010

Scale
N.T.S.

Drawing Name

**PROPOSED BUILDING
SITES**

Drawing No.

1.9

copyright, ©2008 McKissack & McKissack

