



AMERICAN UNIVERSITY

---

W A S H I N G T O N , D C

2009



# American University

## 51 Buildings

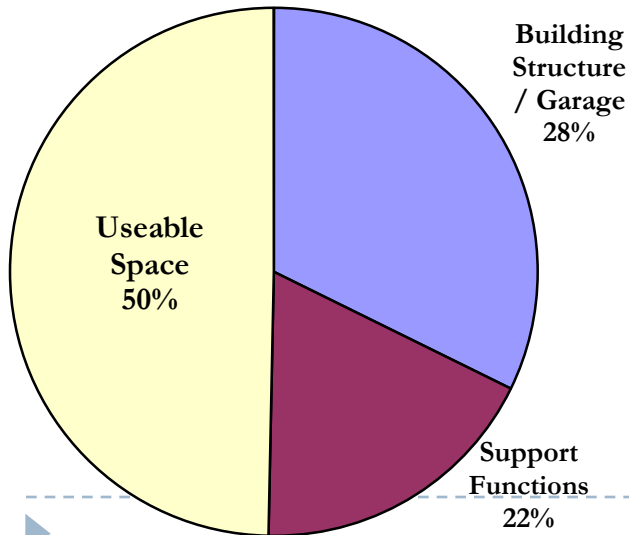
- 9 Residence Halls
- 42 Academic/Administrative

## 3.3 million gross square feet

1,081,000 square feet garages, walls, building structure, etc...

604,000 square feet corridors, lobbies, restrooms, etc...

1,664,000 square feet useable space



↑ Vicinity Map

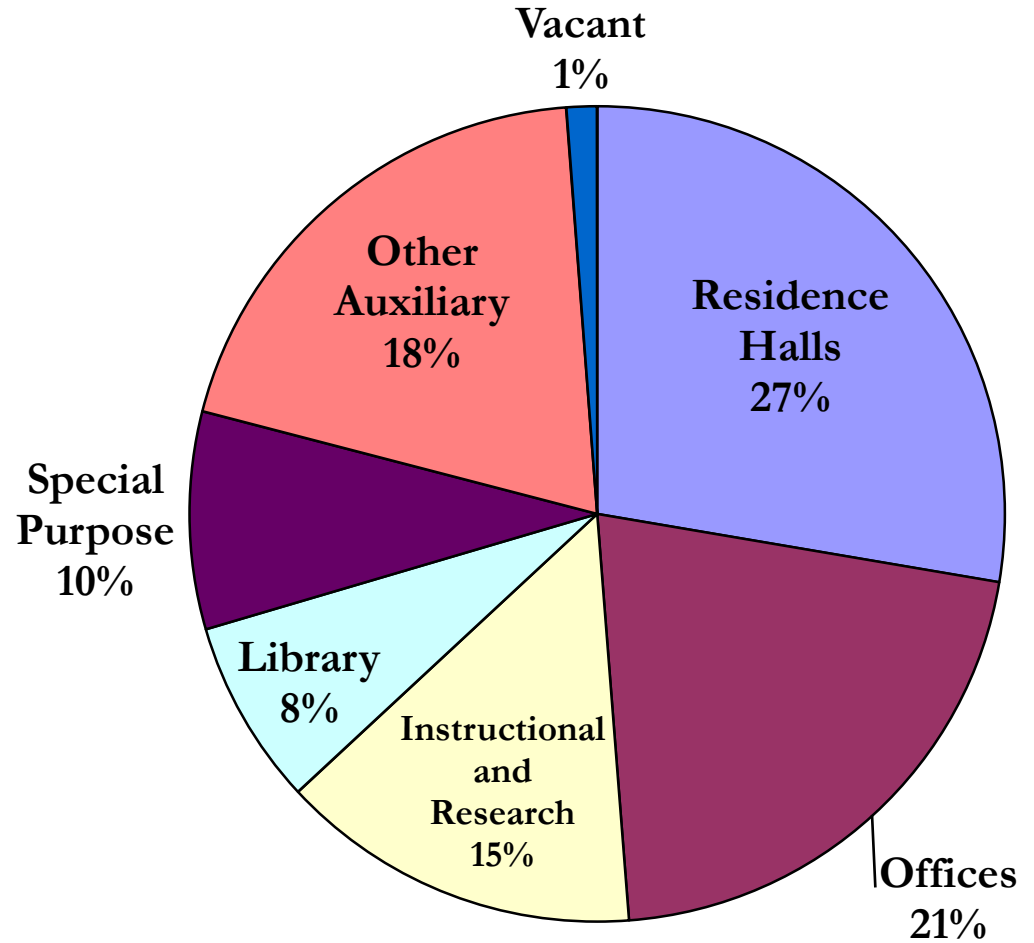




# AMERICAN UNIVERSITY

## Space Use 2009

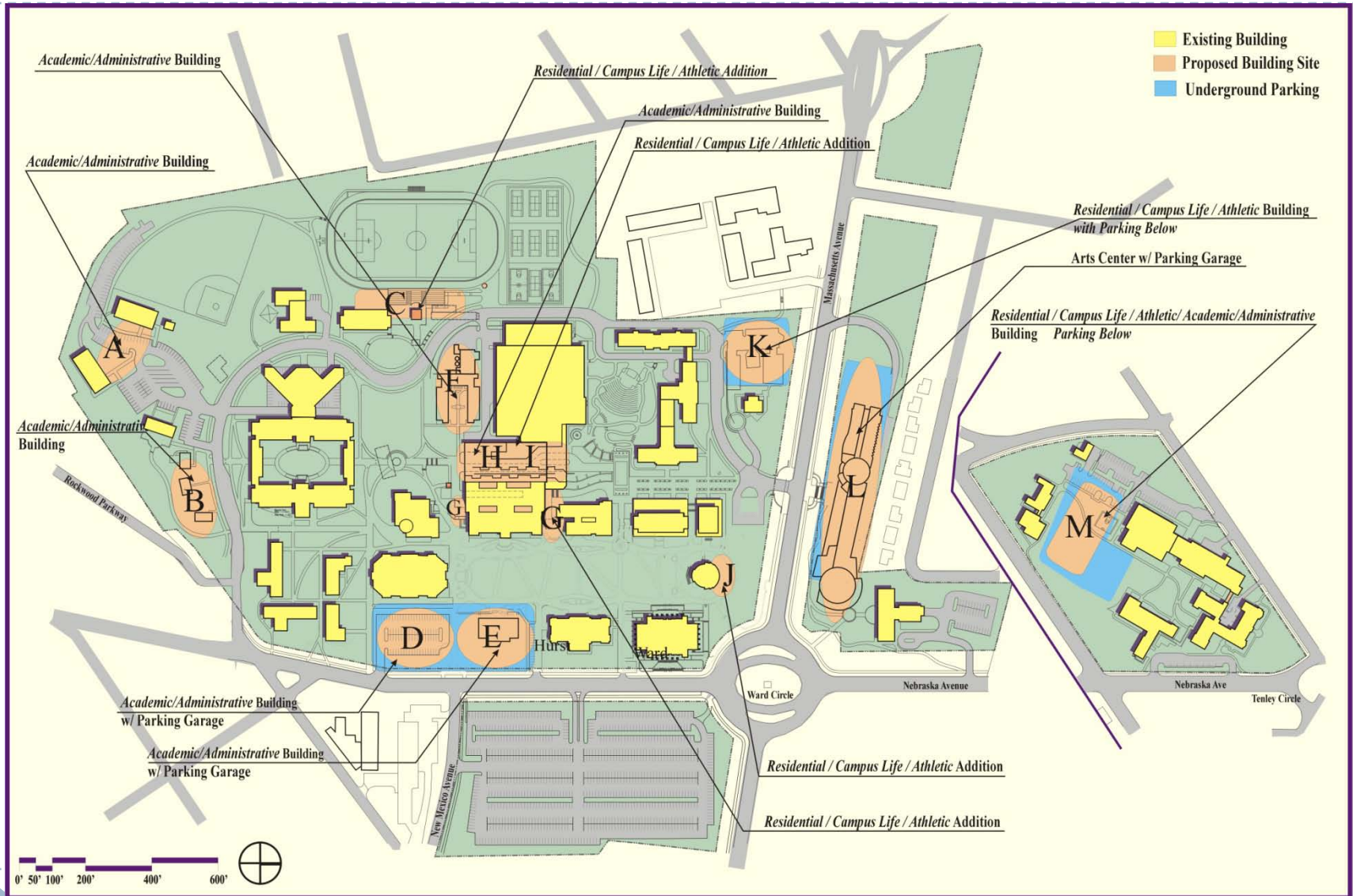
<b>Net useable square feet</b>	<b>1,664,000</b>
• Residence Halls	456,000
• Academic/Administrative Offices	348,000
–Faculty	105,000
–Staff	243,000
• Instructional and Research	251,000
–Classrooms	116,000
–Instructional labs	67,000
–Non-instructional labs	35,000
–Seminar rooms	18,000
–Computer labs	15,000
• Library (includes University and Law)	121,000
• Special Purpose (arena, theater, Kay, etc.)	143,000
• Other Auxiliary (dining, campus store, leased, etc.)	325,000
• Vacant (Kreeger)	20,000





# AMERICAN UNIVERSITY

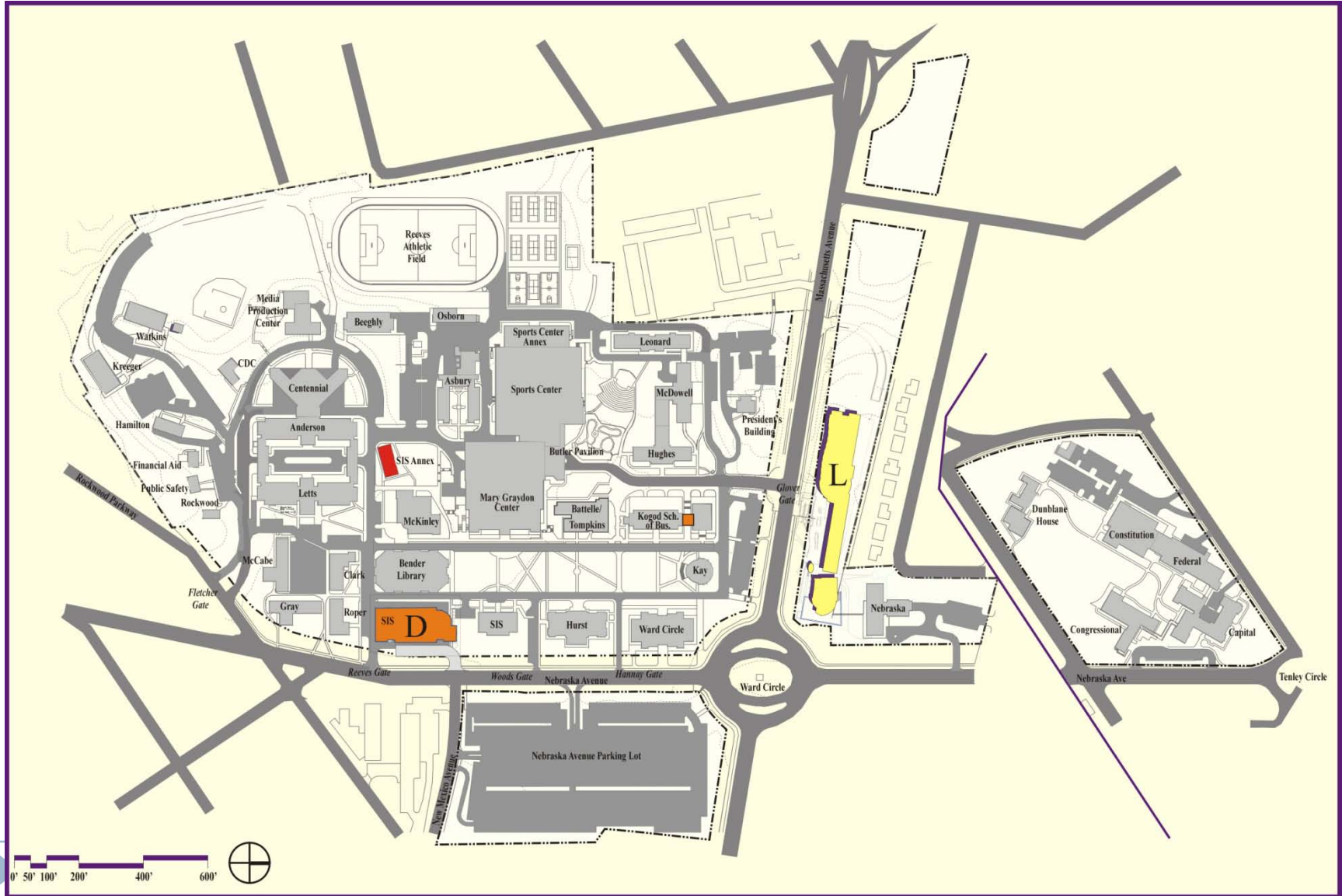
## Campus Plan 2000 - 2010





# AMERICAN UNIVERSITY

## New Construction and Demolition 2000 - 2009





# AMERICAN UNIVERSITY

## Campus Plan 2000 - 2010

### Proposed

Project ID	Building	Size (Gross Floor Area)
A	Academic/ Administrative Building	30,000
B	Academic/ Administrative Building	50,000
C	Athletic Addition	2,000
D	Academic Building-with Parking Garage	100,000
E	Academic Building-with Parking Garage	80,000
F	Academic/ Administrative Building	100,000
<b>G</b>	<b>Campus Life Addition</b>	<b>20,000</b>
H	Academic/ Campus Life Building	
<b>I</b>	<b>Campus Life Addition</b>	<b>20,000</b>
J	Campus Life Addition	10,000
K	Administrative/ Residential Building	15,000
<b>L</b>	<b>Arts Center-with Parking Garage</b>	<b>80,000</b>
M	Residential/ Academic Building-with Parking Garage	75,000

<b>Sub-total</b>	582,000
Demolish Cassell	(45,700)
Demolish SIS Annex	(4,800)
Demolish Osborn	(6,300)
Demolish Asbury	(45,000)
Demolish School of International Service	(11,600)
Demolish Rockwood, Public Safety, Financial-Aid	(5,300)
<b>Total Gross Floor Area Added</b>	<b>463,300</b>

### Actual

Project ID	Building	Proposed Size (Gross Floor Area)	Actual (GFA)
D	Academic Building-with Parking Garage	100,000	65,000
G	Campus Life Addition	20,000	-
L	Arts Center-with Parking Garage	80,000	78,000
	Kogod Expansion	-	2,173
<b>Sub-total</b>		200,000	145,173
Demolish Cassell		(45,700)	(45,700)
Demolish SIS Annex		(4,800)	(4,800)
<b>Total Gross Floor Area Added</b>		<b>149,500</b>	<b>94,673</b>

“...the university will not increase its gross floor area by more than 400,000 square feet over the next decade.”

American University 2000 Campus Plan,  
updated August 2002.



American University

New Construction or Demolition 2000-2009



Cassell Center

**2000**



Katzen Arts Center

**2009**



View from Ward Circle









# AMERICAN UNIVERSITY

## New Construction or Demolition 2000-2009



**New Lecture Hall**

**2000**



**Kogod School of Business Expansion**

**2009**





AMERICAN UNIVERSITY

## Kogod School of Business Expansion





AMERICAN UNIVERSITY

Kogod School of Business Expansion





# AMERICAN UNIVERSITY

## New Construction or Demolition 2000-2009



Nebraska Hall

**2000**



Nebraska Hall

**2009**





# AMERICAN UNIVERSITY

## New Construction or Demolition 2000-2009



**Walkway Reconstruction  
"Bridge" &**

**MGC Front Entrance Extension**



## **Other Major Projects 2000 - 2009**

**Greenberg Theatre was constructed in 4200 Wisconsin Avenue**

**Battelle-Tompkins remodeled for the College of Arts and Sciences**

**Clark – Roper – Gray & McCabe Renovated**

**Mary Graydon Center 2<sup>nd</sup> Floor Remodeled**

**School of International Service (SIS) Annex Razed**

**Mary Graydon Center Tavern and First Floor Remodeled**

**Human Resources Offices Relocated to 3201 New Mexico Avenue**

**Washington College of Law Lobby Renovated**

**Watkins Remodeled**

**Athletic Fields Reconstructed**



# AMERICAN UNIVERSITY

## School of International Service

View from Quad







# AMERICAN UNIVERSITY

## School of International Service

View from Nebraska Avenue





From SIS looking South  
July 28, 2009

From Bender Library looking East  
July 28, 2009





# AMERICAN UNIVERSITY

## School of International Service

May 2009 Construction Photos



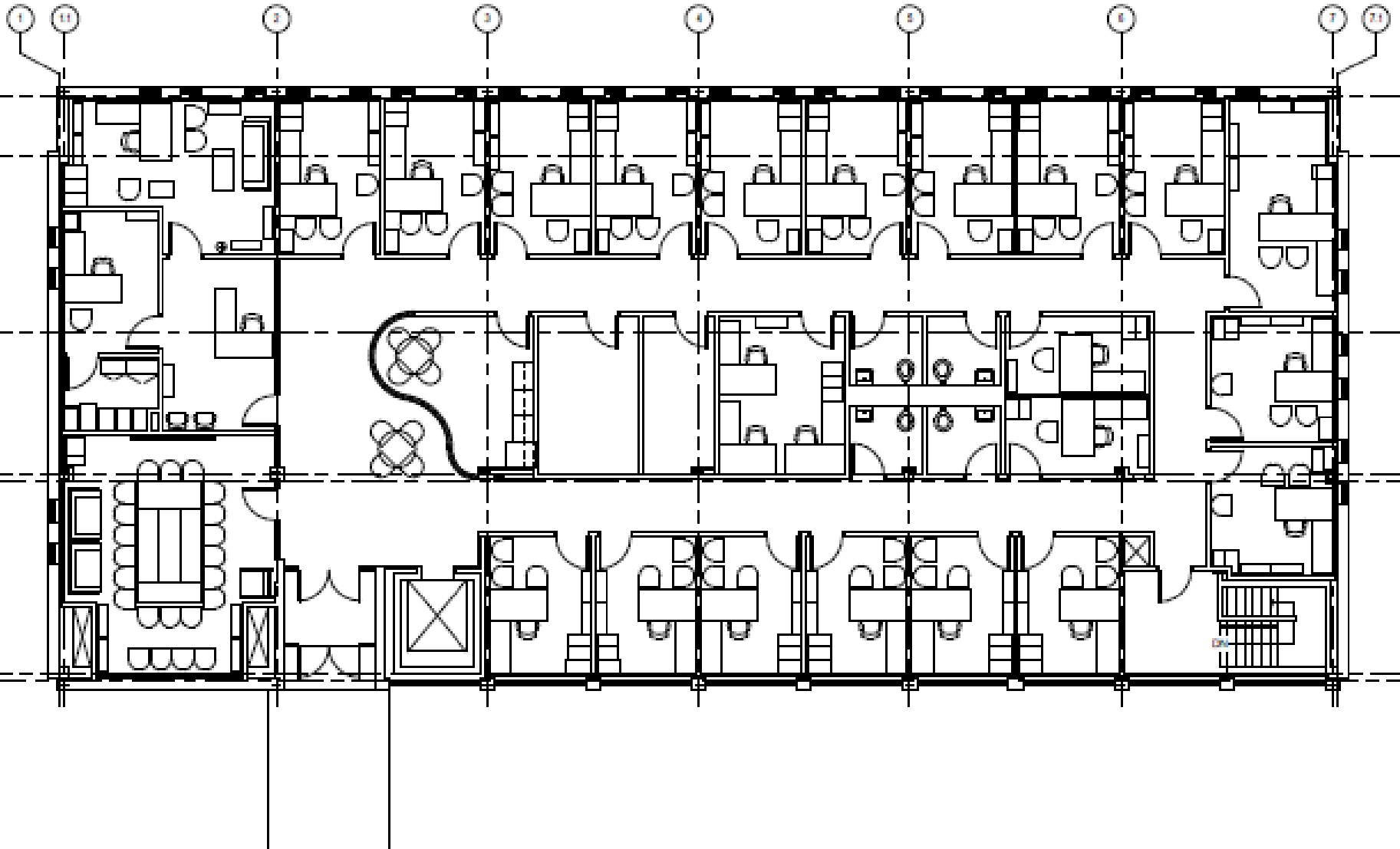


AMERICAN UNIVERSITY

Kreeger Remodeling

Lobby







# AMERICAN UNIVERSITY

## Proposed McKinley Remodeling



Existing view from Sports Center Parking Garage



Proposed view from Sports Center Parking Garage





AMERICAN UNIVERSITY

Proposed McKinley Remodeling

View from Quad East of Mary Graydon Center





# AMERICAN UNIVERSITY

## Virtual Model of Campus







# AMERICAN UNIVERSITY

## University Grounds and Arboretum

Media Production Center Green Roof





# AMERICAN UNIVERSITY

## University Grounds and Arboretum

Media Production Center Green Roof





AMERICAN UNIVERSITY

University Grounds and Arboretum





# AMERICAN UNIVERSITY

## University Grounds and Arboretum





AMERICAN UNIVERSITY

University Grounds and Arboretum





# AMERICAN UNIVERSITY

## University Grounds and Arboretum





AMERICAN UNIVERSITY

University Grounds and Arboretum





AMERICAN UNIVERSITY

University Grounds and Arboretum







The End