



**North Hall Further
Processing
October 20, 2011**



AMERICAN UNIVERSITY
WASHINGTON, DC



AMERICAN UNIVERSITY

Existing Campus Plan

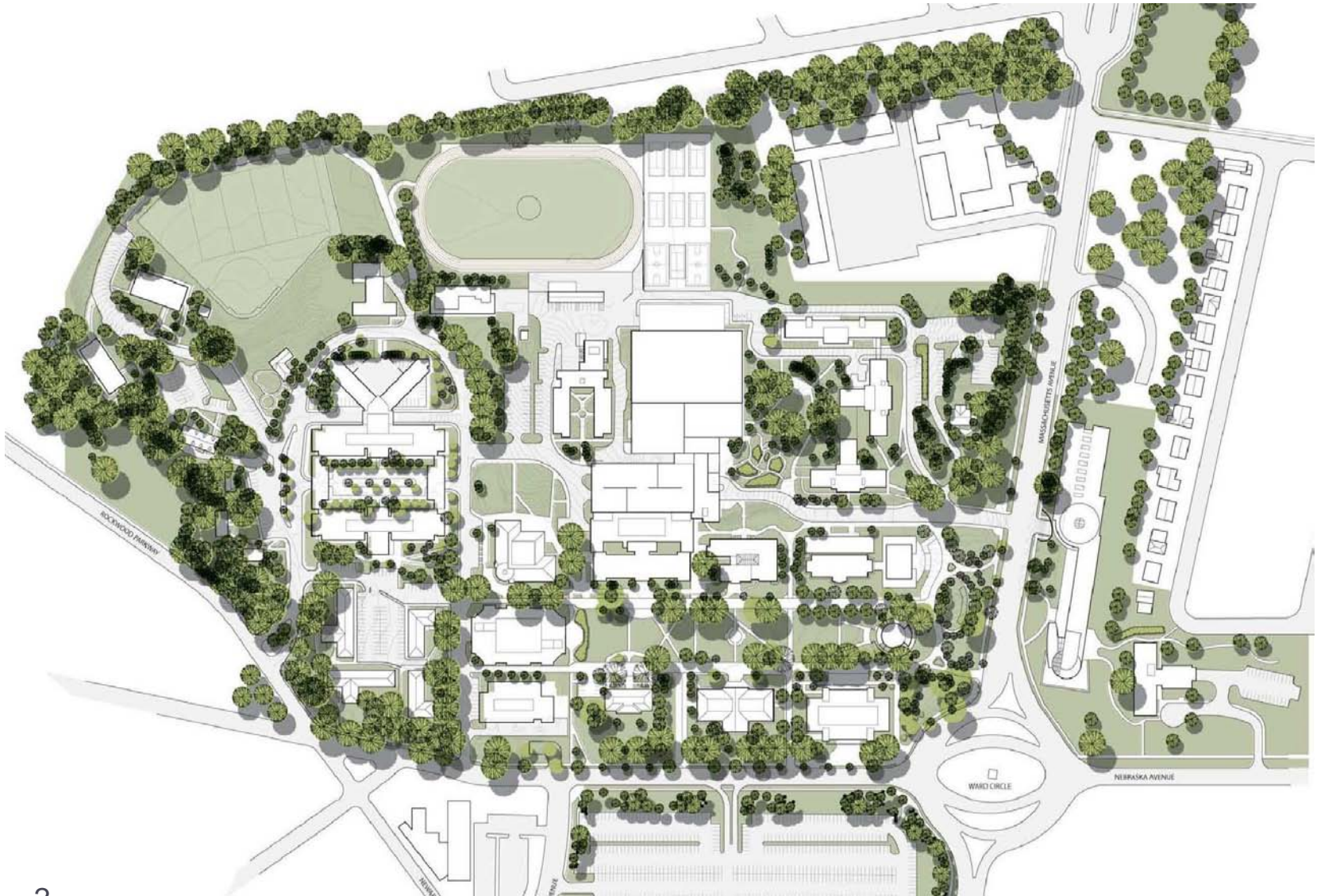








Photo B. President's Office Building







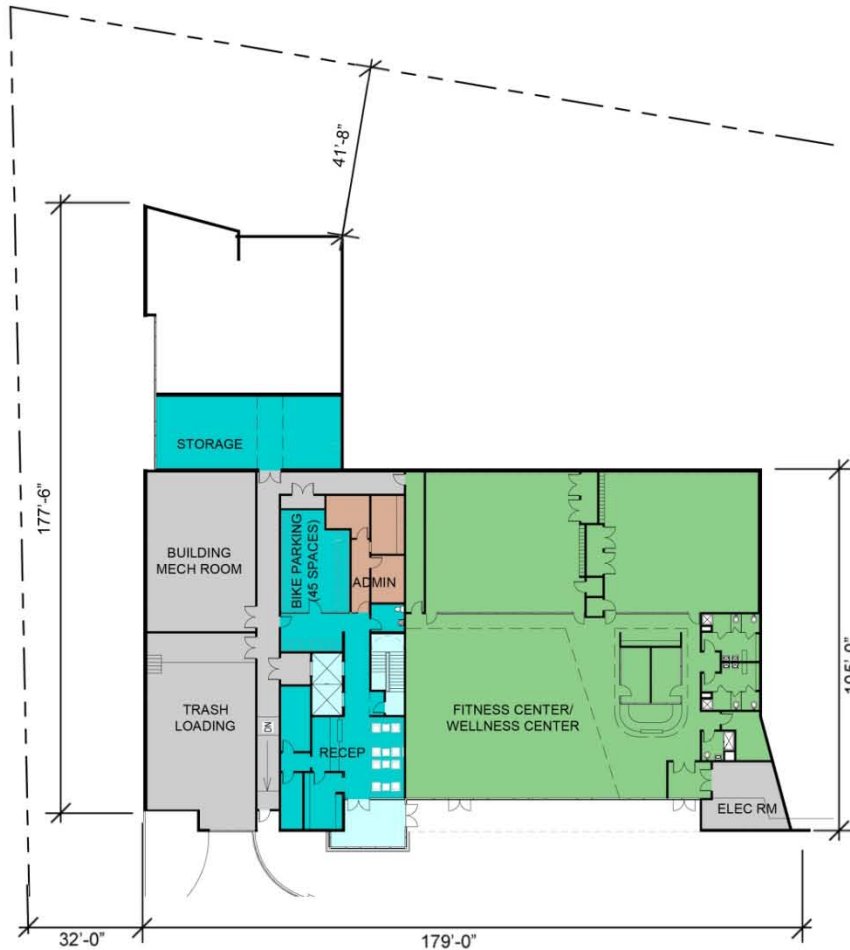


North Hall – Site Plan – October 20, 2011





North Hall – Ground Floor Plan – October 20, 2011



GROUND FLOOR

- 8,700 SF - PROGRAM SPACE
- 4,110 SF - SUPPORT
- 3,475 SF - SHARED SPACES/ RESIDENCE HALL
- 480 SF - RESIDENTIAL LIFE SUPPORT
- 935 SF - LOBBY/ CIRCULATION
- 17,700 GSF - GROUND FLOOR**

RESIDENTIAL FLOORS

- 16,700 GSF - FLOORS 2-7
- 9,600 GSF - FLOOR 8

126,500 GSF - TOTAL BUILDING

358 BEDS TOTAL

- 244 (TYPE A @ 755 SF)
- 12 (TYPE B @ 300 SF)
- 102 (TYPE C @ 1,045 SF)

307 SF/BED

2

- TYPE A UNITS - 36 STUDENT BEDS (9 UNITS)
- TYPE B UNITS - 1 STUDENT BED (1 UNIT)
- TYPE C UNITS - 12 STUDENTS (2 UNITS)
- FACULTY UNIT (1 UNIT)

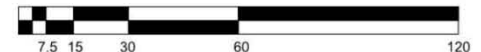
3 - 7

- TYPE A UNITS - 36 STUDENT BEDS (9 UNITS)
- TYPE B UNITS - 2 STUDENT BEDS (2 UNITS)
- TYPE C UNITS - 18 STUDENTS (3 UNITS)

8

- TYPE A UNITS - 28 STUDENT BEDS (7 UNITS)
- TYPE B UNITS - 1 STUDENT BED (1 UNIT)

- LOBBY / CIRCULATION
- PROGRAM SPACE
- RESIDENTIAL LIFE SUPPORT
- SHARED SPACES - RESIDENCE HALL
- SUPPORT





North Hall – Typical Floor Plan – October 20, 2011



GROUND FLOOR

- 8,700 SF - PROGRAM SPACE
- 4,110 SF - SUPPORT
- 3,475 SF - SHARED SPACES/ RESIDENCE HALL
- 480 SF - RESIDENTIAL LIFE SUPPORT
- 935 SF - LOBBY/ CIRCULATION
- 17,700 GSF - GROUND FLOOR**

RESIDENTIAL FLOORS

- 16,700 GSF - FLOORS 2-7**
- 9,600 GSF - FLOOR 8**

126,500 GSF - TOTAL BUILDING

358 BEDS TOTAL

- 244 (TYPE A @ 755 SF)
- 12 (TYPE B @ 300 SF)
- 102 (TYPE C @ 1,045 SF)

307 SF/BED

2

- TYPE A UNITS - 36 STUDENT BEDS (9 UNITS)
- TYPE B UNITS - 1 STUDENT BED (1 UNIT)
- TYPE C UNITS - 12 STUDENTS (2 UNITS)
- FACULTY UNIT (1 UNIT)

3 - 7

- TYPE A UNITS - 36 STUDENT BEDS (9 UNITS)
- TYPE B UNITS - 2 STUDENT BEDS (2 UNITS)
- TYPE C UNITS - 18 STUDENTS (3 UNITS)

8

- TYPE A UNITS - 28 STUDENT BEDS (7 UNITS)
- TYPE B UNITS - 1 STUDENT BED (1 UNIT)

- LOBBY / CIRCULATION
- SHARED SPACES - RESIDENCE HALL
- SUPPORT
- UNIT TYPE A
- UNIT TYPE B
- UNIT TYPE C

The Applicant requests the flexibility to vary the location and design of all interior components, including partitions, structural slabs, doors, hallways, columns, stairways, mechanical rooms, elevators and toilet rooms, provided that the variations do not change the exterior configuration of the structure



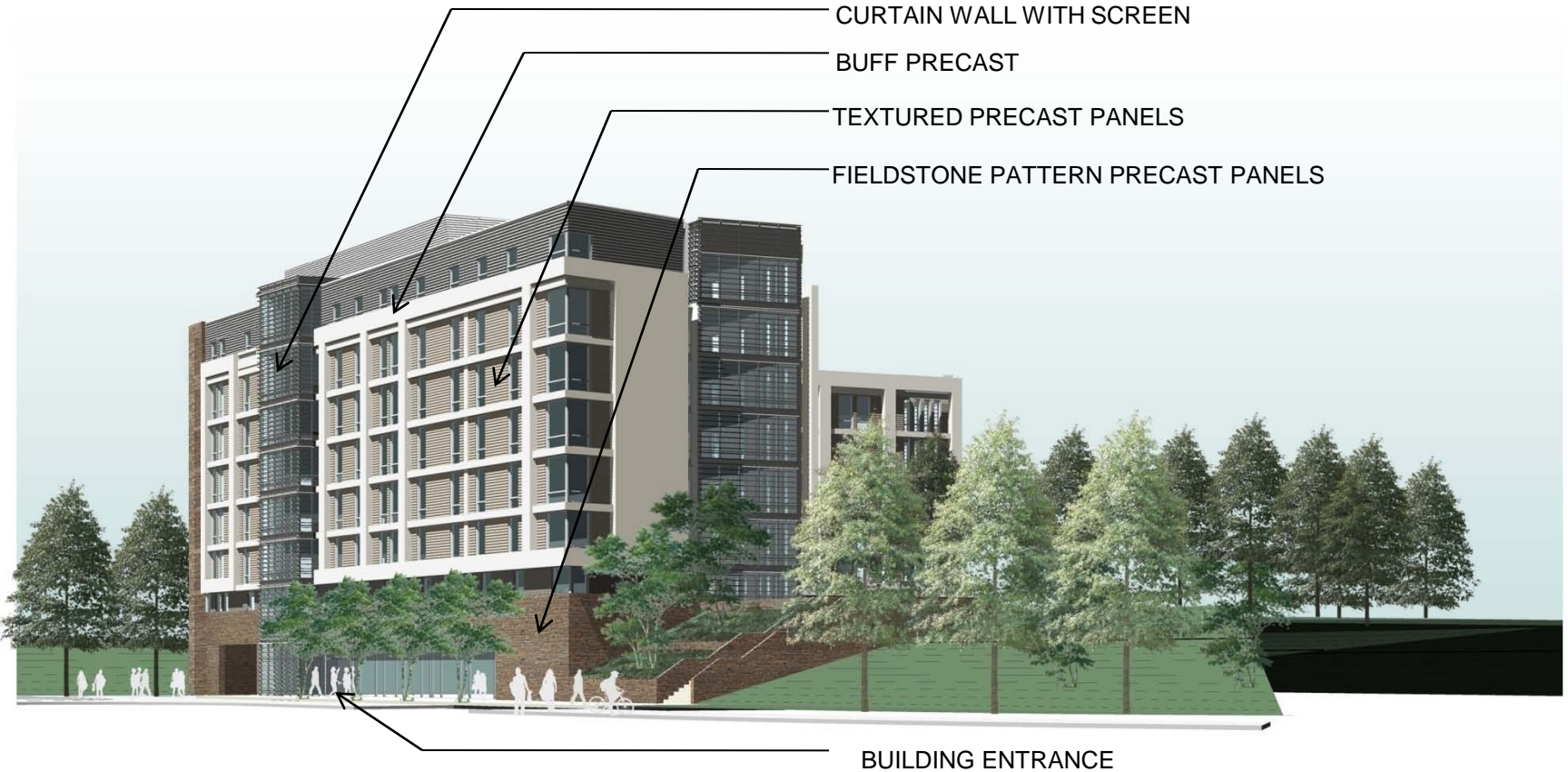
North Hall - Perspective View Key Plan







North Hall – Perspective View 1 – from McDowell



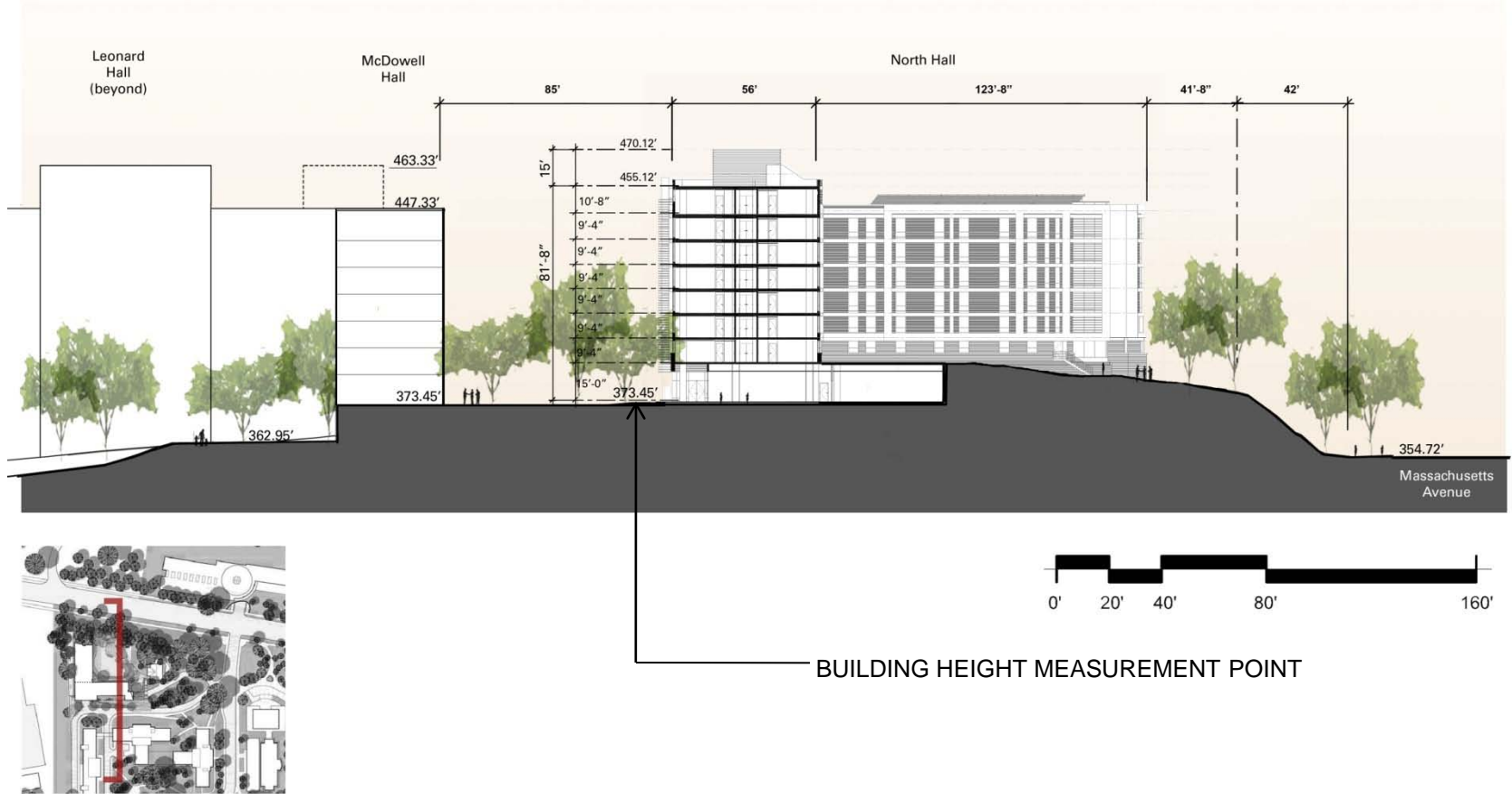
The Applicant requests the flexibility to vary the final selection of the exterior materials within the color ranges and material types as proposed, based on the availability at the time of construction. The Applicant requests the flexibility to make refinements to exterior details and dimensions, including belt courses, sills, bases, cornices, façade patterns and articulation, railings, and trim.







North Hall – Site Section – October 20, 2011





























AMERICAN UNIVERSITY

