A historical map of Washington, D.C., showing the city's grid and the Potomac River. The map is overlaid with a semi-transparent blue filter. In the top right, there is a decorative oval containing the text 'Plat. V. of the City of WASHINGTON.' The Potomac River is labeled 'POTOMAC' and 'River Creek'. 'George Town' is labeled on the left side. A compass rose is visible in the bottom left corner.

American University, Washington College of Law

August 30, 2011



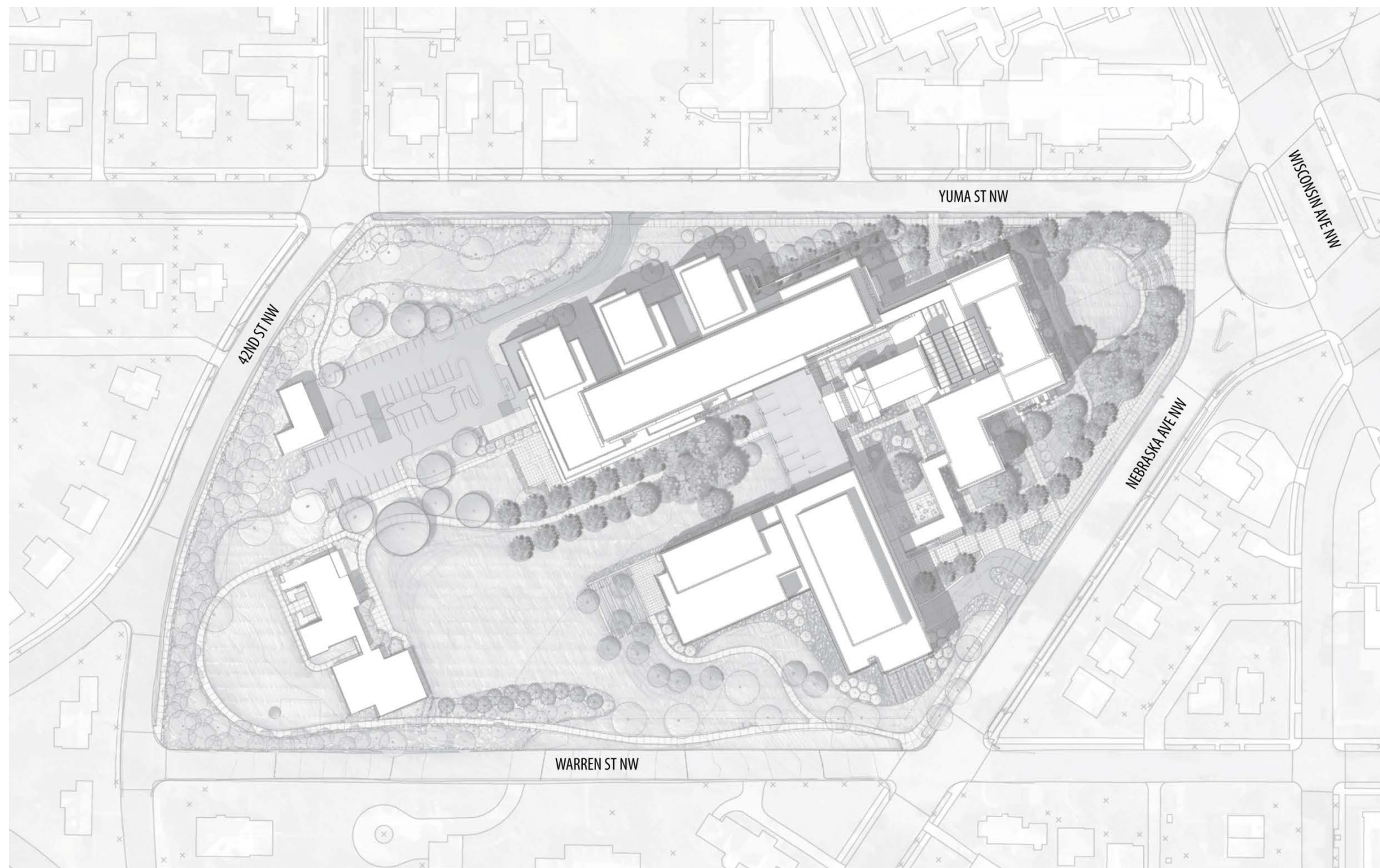
Revisions since May 2011:

Reconfiguration of Yuma Street addition

- Scale
- Prominence of Yuma entry

Maintenance of open access to central space from Yuma

Development of accessible front lawn and public space on Tenley Circle





AMERICAN UNIVERSITY

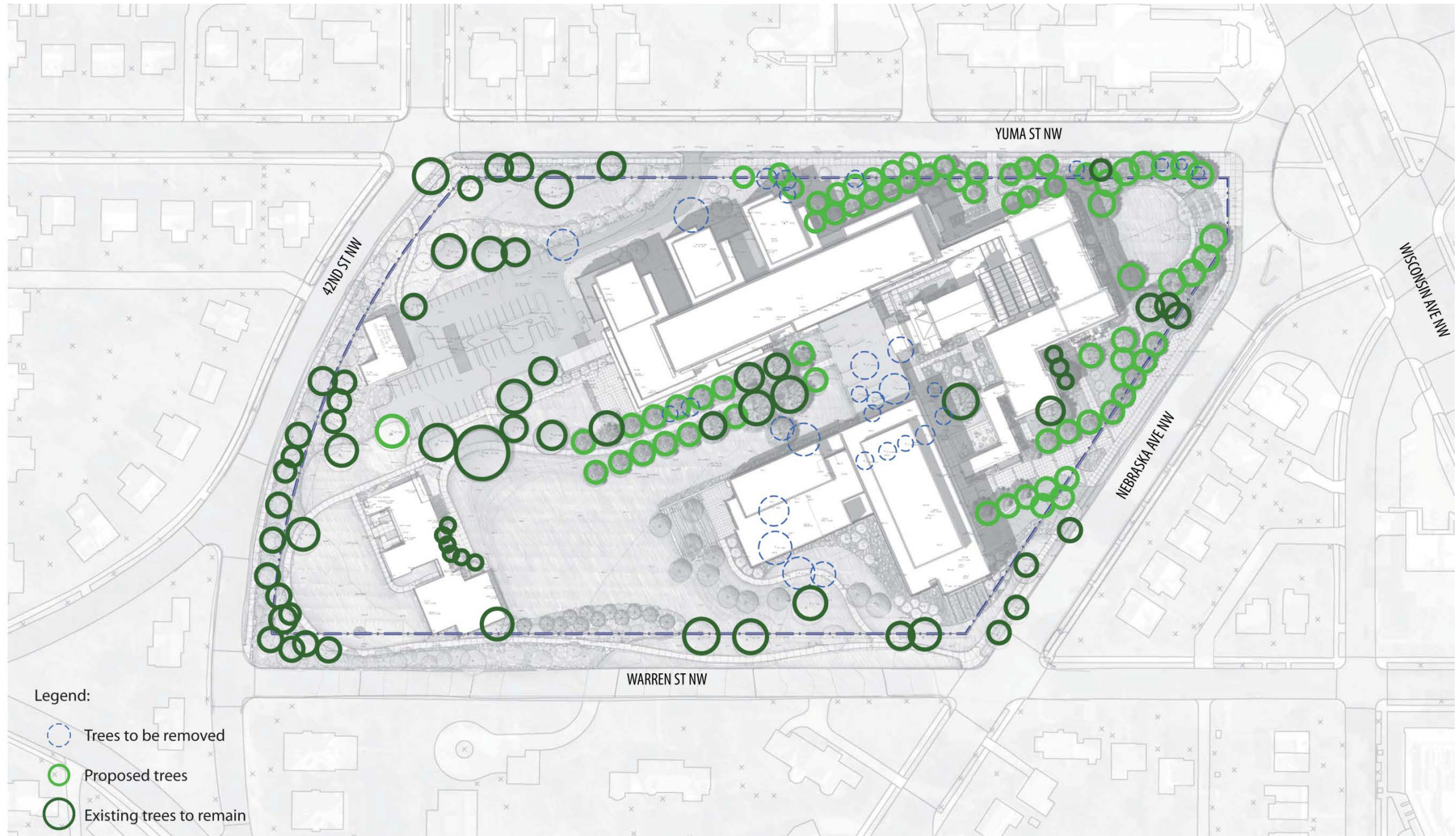
Tenley Campus Preliminary Landscape Plan





AMERICAN UNIVERSITY

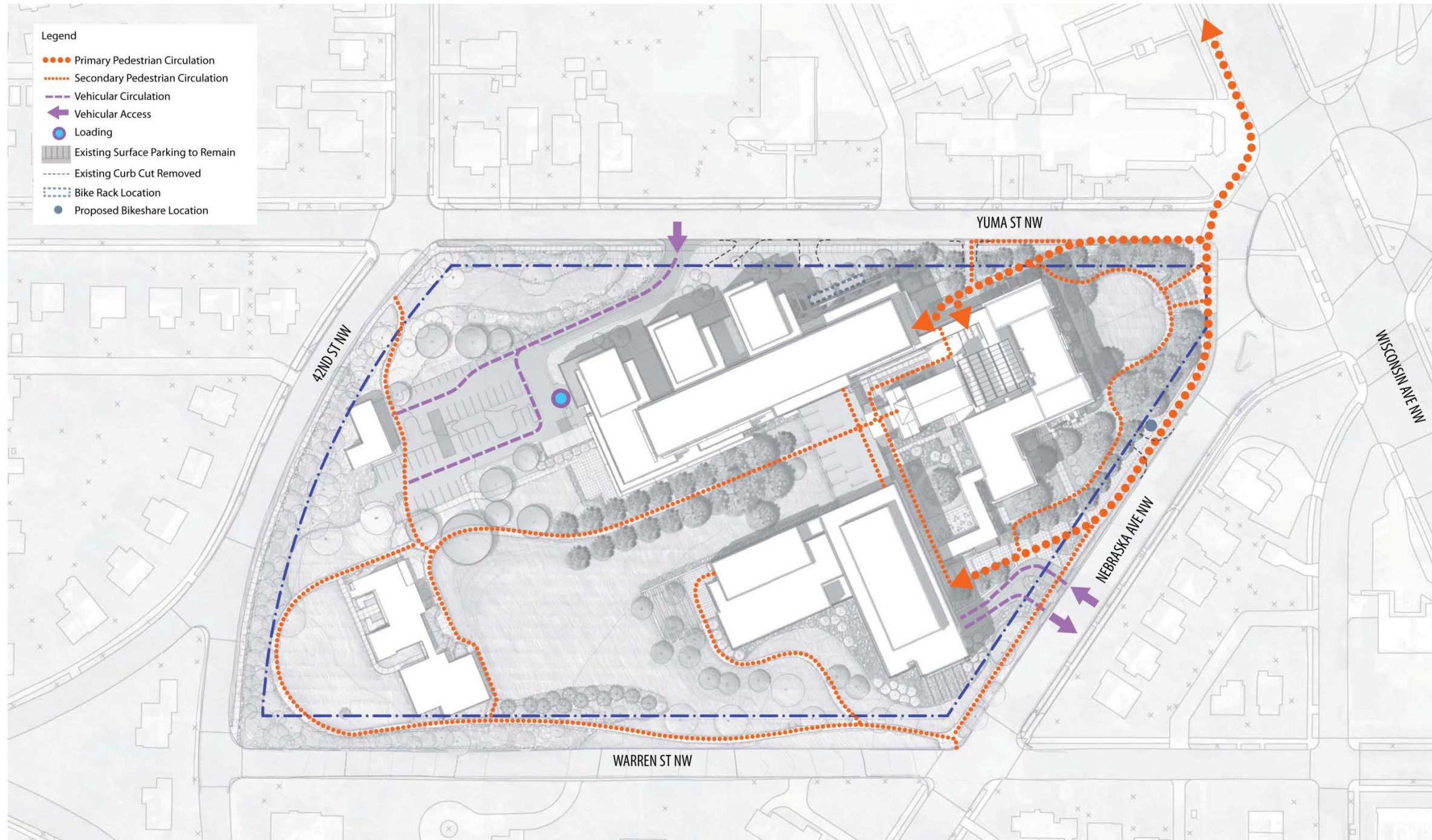
Tenley Campus Tree Preservation Plan





AMERICAN UNIVERSITY

Tenley Campus Pedestrian and Vehicular Circulation





AMERICAN UNIVERSITY

Tenley Campus Building Elevations



EAST ELEVATION

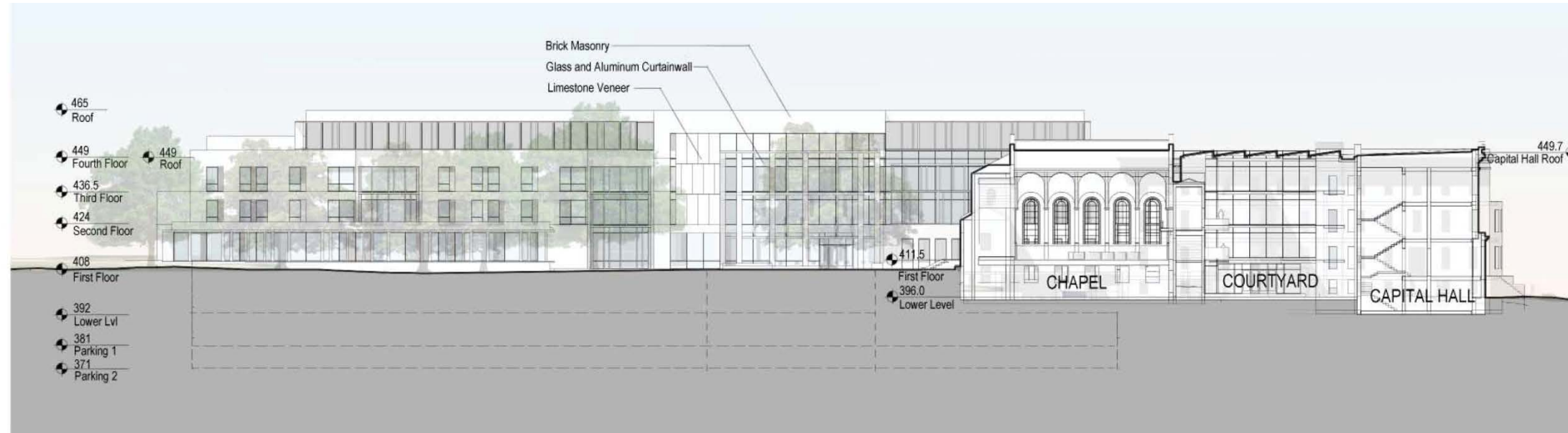


NORTH ELEVATION



AMERICAN UNIVERSITY

Tenley Campus Building Elevations



SOUTH ELEVATION - COURTYARD



NORTH ELEVATION - COURTYARD



AMERICAN UNIVERSITY

Tenley Campus Aerial





AMERICAN UNIVERSITY

Tenley Campus View from Tenley Circle





AMERICAN UNIVERSITY

Tenley Campus Yuma Entry View





AMERICAN UNIVERSITY

Tenley Campus Yuma Street View





AMERICAN UNIVERSITY

Tenley Campus Nebraska Entry View





AMERICAN UNIVERSITY

Tenley Campus Courtyard View



Pl. A. V.
of the City of
WASHINGTON.

Author & Publisher J.

George Town

Silver Creek

POTOMAC

ANCH

