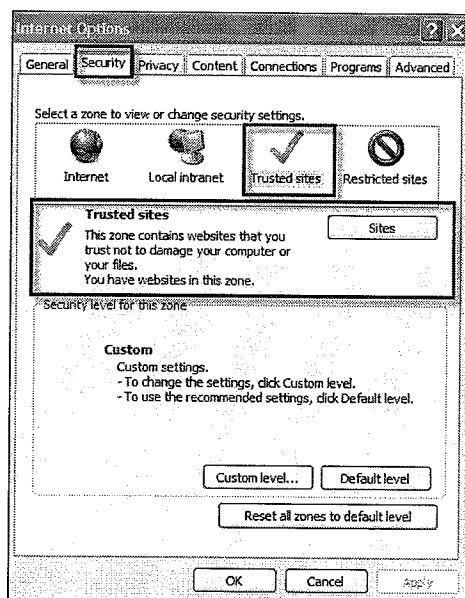


Learning Portal System (LPS) Client Administrator Recommended Desktop Configurations

The following settings are recommended to ensure the expected functionality of the LPS administrator links. Please contact your internal help desk if you have questions related to these requested changes or if these settings are controlled by your network administrator.

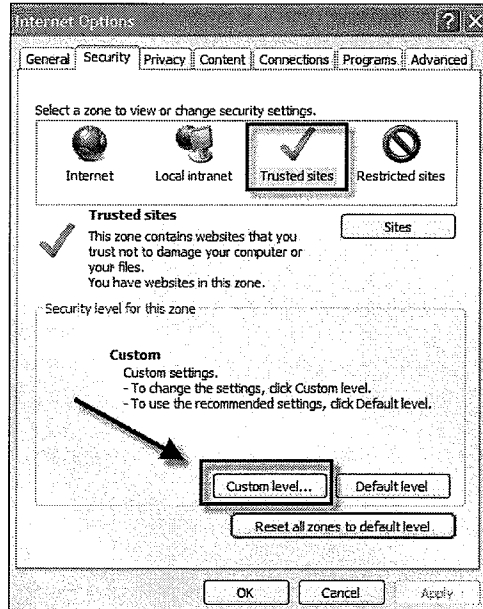
Add LPS url's into trusted sites security zone within Internet Explorer

- Open Internet Explorer browser
- Click **Tools** drop down in IE browser
- Click **Internet Options** in drop down menu
- Click **Security Tab**
- Click **Trusted Sites Zone Icon**
- Click **Sites Tab**
- Enter both <https://lps.ddiworld.com> and <http://lps.ddiworld.com> url's into trusted sites. Make sure "require server verification" is unchecked for both url's to be successfully entered.

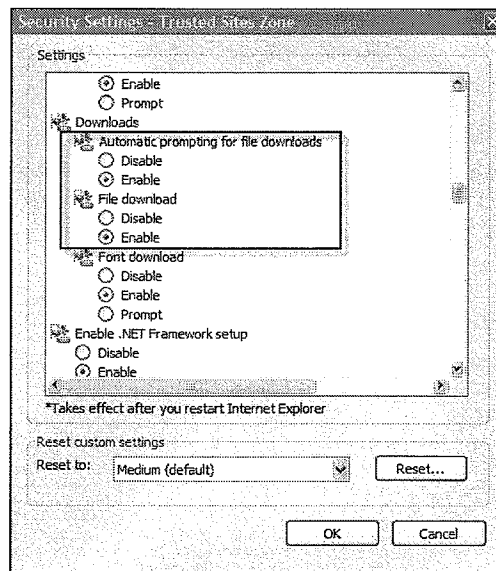


Enable file downloads and mixed content in trusted sites security zone settings

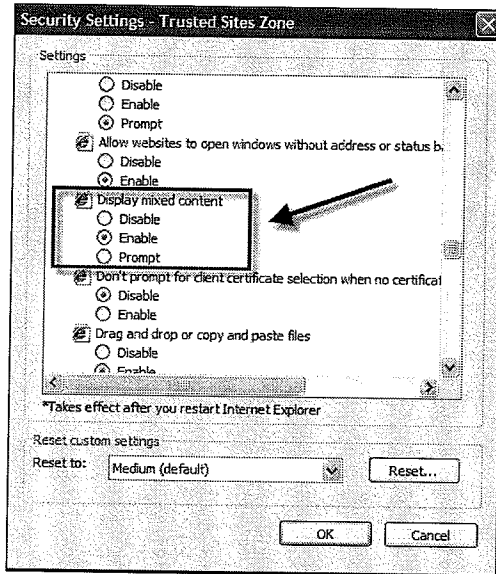
- Click **Trusted Sites Zone** Icon
- Click **Custom Level** tab for trusted sites security settings



- Scroll down to “Downloads” section and select **Enable** for both automatic prompting for file downloads and file download



- Scroll down to “Miscellaneous” Settings and select **Enable** for Display mixed content



- Click **OK**