

Promoting a “Culture of Health” in the American City

Mindy Thompson Fullilove, MD, Hon AIA
Milano The New School for Public Engagement

**HE TOLD HIS LAST BABY MAMA
HE'D STAY WITH HER TOO.**

BE A KID. DON'T HAVE ONE.

THERE ARE ONLY TWO WAYS TO PREVENT TEEN PREGNANCY --
USE BIRTH CONTROL EVERY TIME OR DON'T HAVE SEX.

WWW.DCCAMPAIGN.ORG



THIS VIDEO IS PROVIDED BY PROVIDER & IS NOT A PRODUCT OF THE DCC. © 2008 DCC. ALL RIGHTS RESERVED. THIS VIDEO IS PROVIDED BY PROVIDER & IS NOT A PRODUCT OF THE DCC.

WAYS TO PROMOTE HEALTH WITH PRESCHOOLERS

CHILD CARE:



Teacher leads indoor or outdoor physical activity, and children are served healthy meals and snacks during the day.

HOME:



Start with a healthy breakfast.

DOCTOR'S OFFICE:



Weight, height, and BMI are measured; nutrition and physical activity counseling are provided; and nutrition education support services are referred when appropriate.

COMMUNITY FARMERS' MARKET:



Pick up fruits and vegetables to cook for dinner.

LOCAL SCHOOL PLAYGROUND AND/OR NEIGHBORHOOD PARK:



Children and parents walk to local school playground or neighborhood park to play.













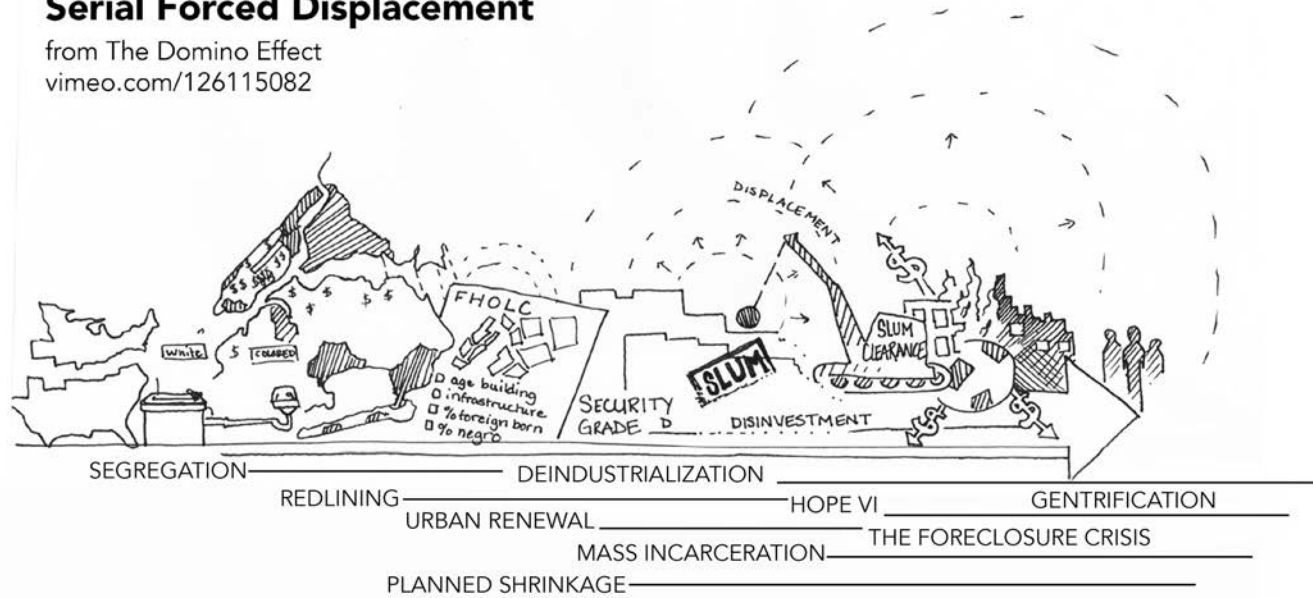






Serial Forced Displacement

from The Domino Effect
vimeo.com/126115082





WAYS TO PROMOTE HEALTH WITH PRESCHOOLERS

HOME:

Start with a healthy breakfast.

CHILD CARE:

Teacher leads indoor or outdoor physical activity, and children are served healthy meals and snacks during the day.

DOCTOR'S OFFICE:

Weight, height, and BMI are measured; nutrition and physical activity counseling are provided; and nutrition education support services are referred when appropriate.

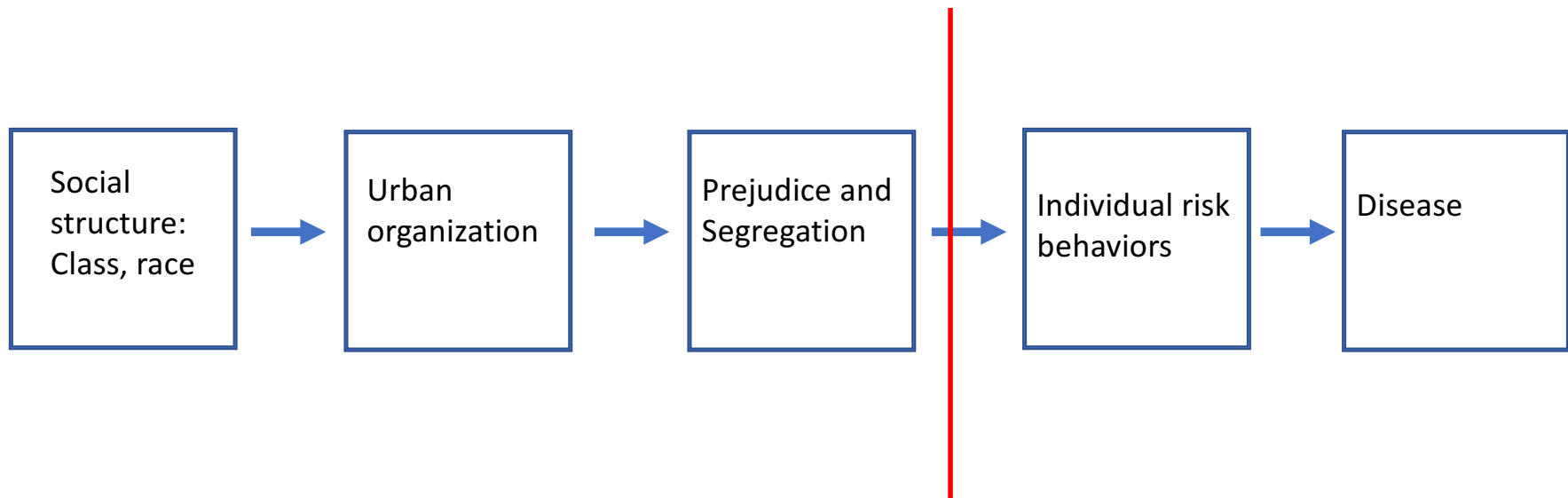
COMMUNITY FARMERS' MARKET:

Pick up fruits and vegetables to cook for dinner.

LOCAL SCHOOL PLAYGROUND AND/OR NEIGHBORHOOD PARK:

Children and parents walk to local school playground or neighborhood park to play.

Instructions from the US Centers for Disease Control and Prevention for a meeting on “social structure” and HIV



THE AIDS Disaster: Response to the AIDS Epidemic in Alameda County, CA

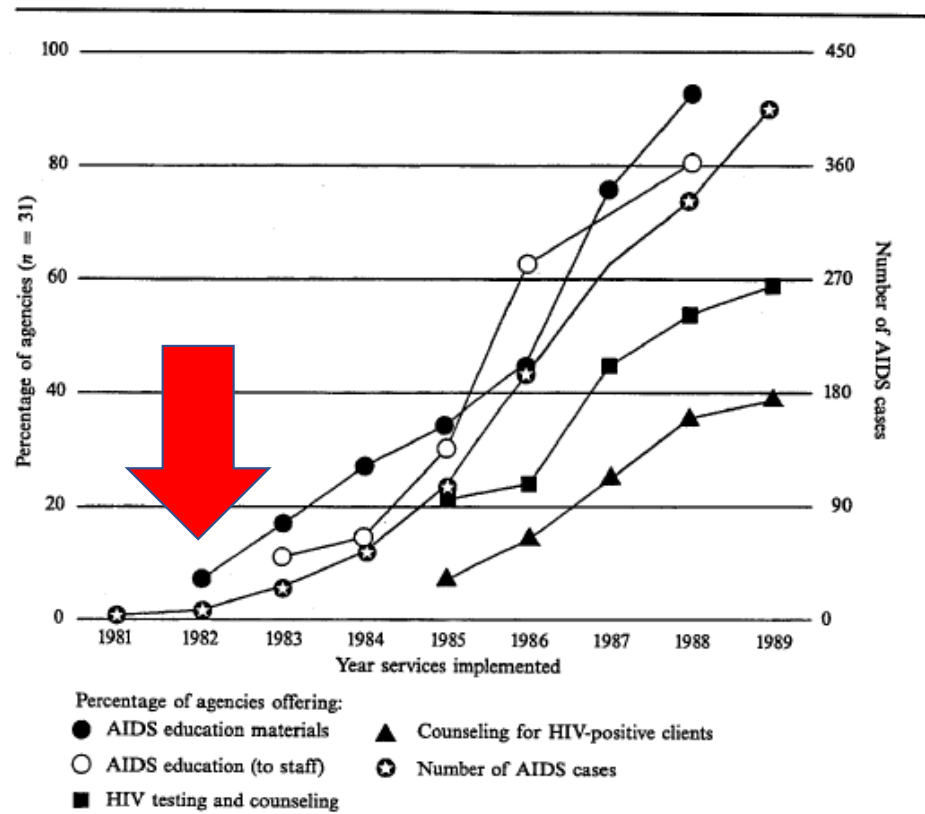


Figure 1. AIDS prevention services.



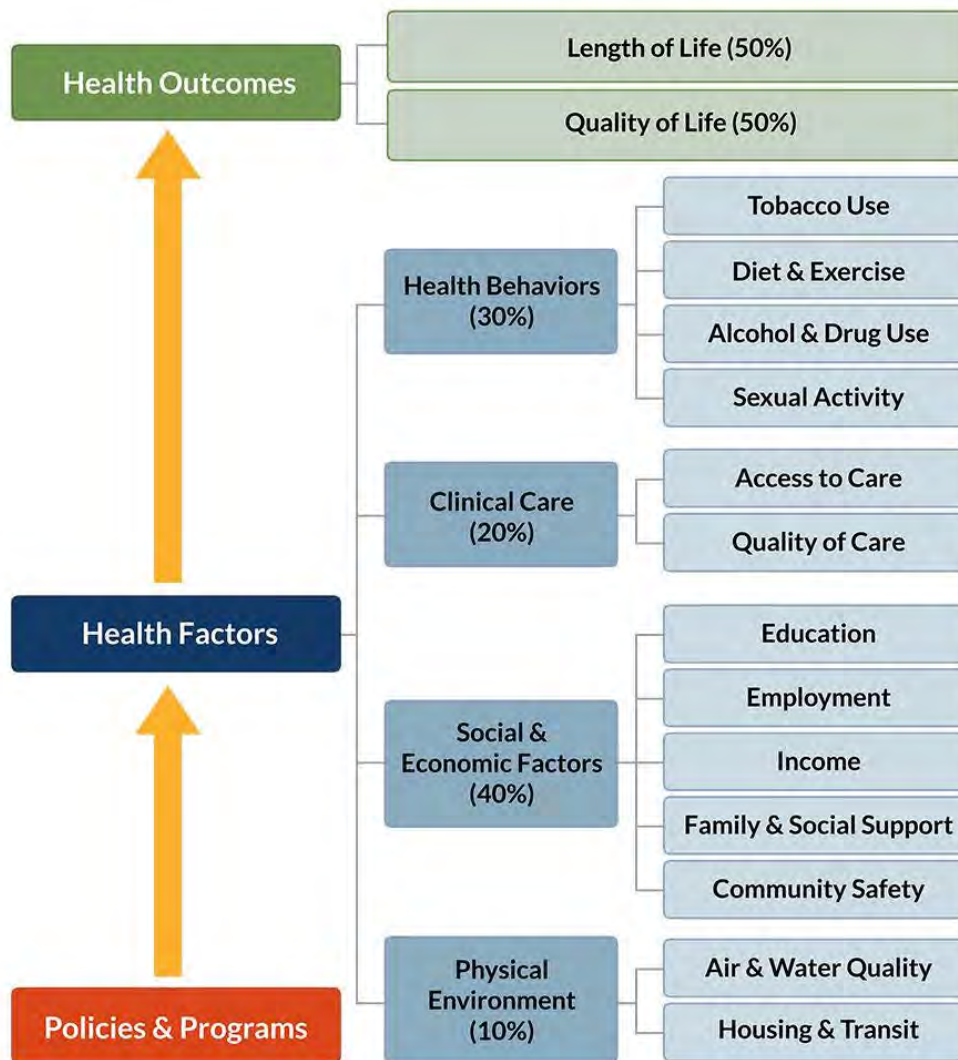
Robert Wood Johnson Foundation



Culture of Health: Underlying Principles

1. Good health flourishes across geographic, demographic, and social sectors.
2. Attaining the best health possible is valued by our entire society.
3. Individuals and families have the means and the opportunity to make choices.
4. Business, government, individuals, and organizations work together to build healthy communities.
5. No one is excluded.
6. Everyone has access to affordable, quality health care.
7. Health care is efficient and equitable.
8. The economy is less burdened by excessive and unwarranted health care spending.
9. Keeping everyone as healthy as possible guides public and private decision-making.
10. Americans understand that we are all in this together.

<http://www.rwjf.org/en/how-we-work/building-a-culture-of-health.html>

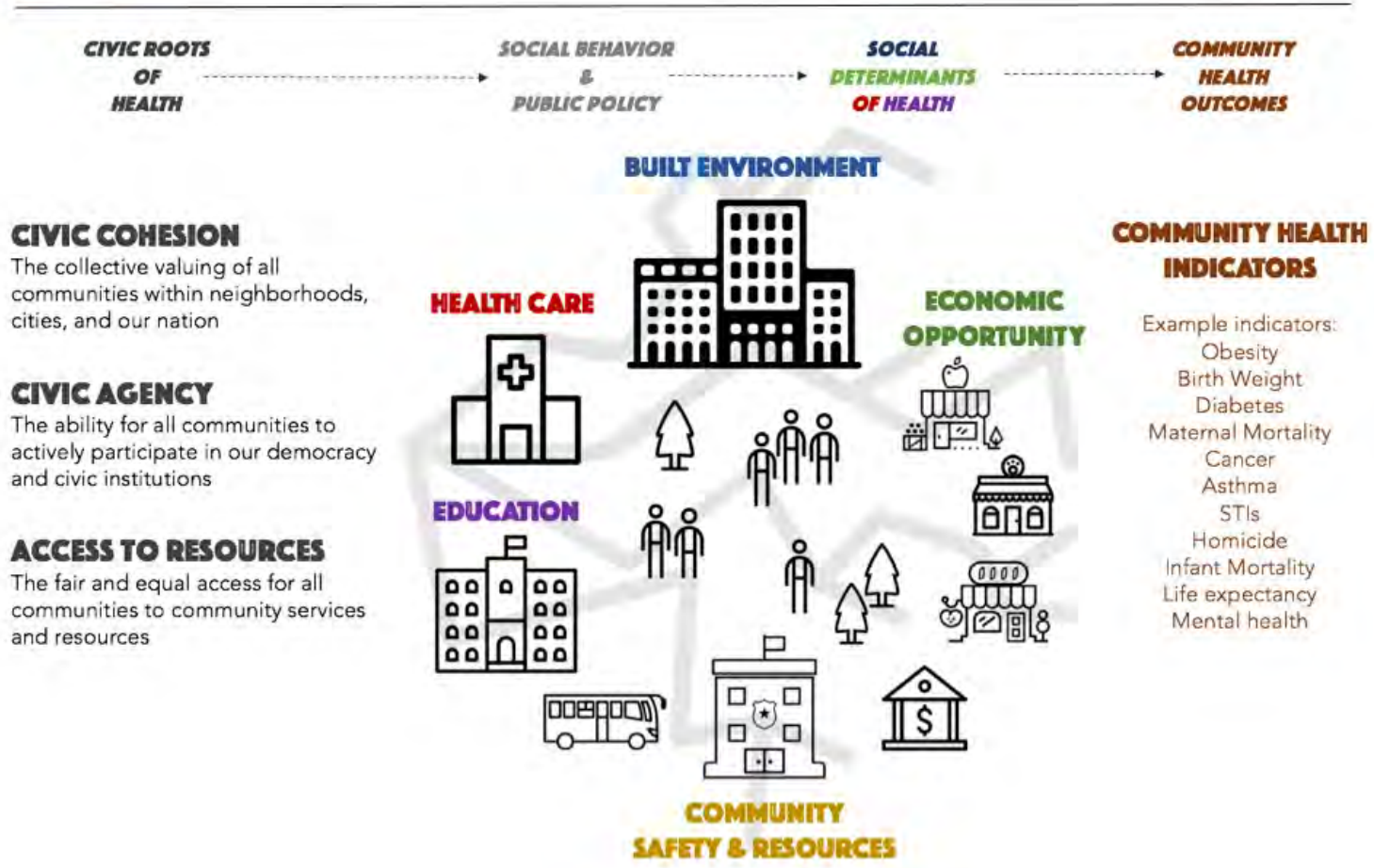


County Health Rankings model © 2016 UWPHI

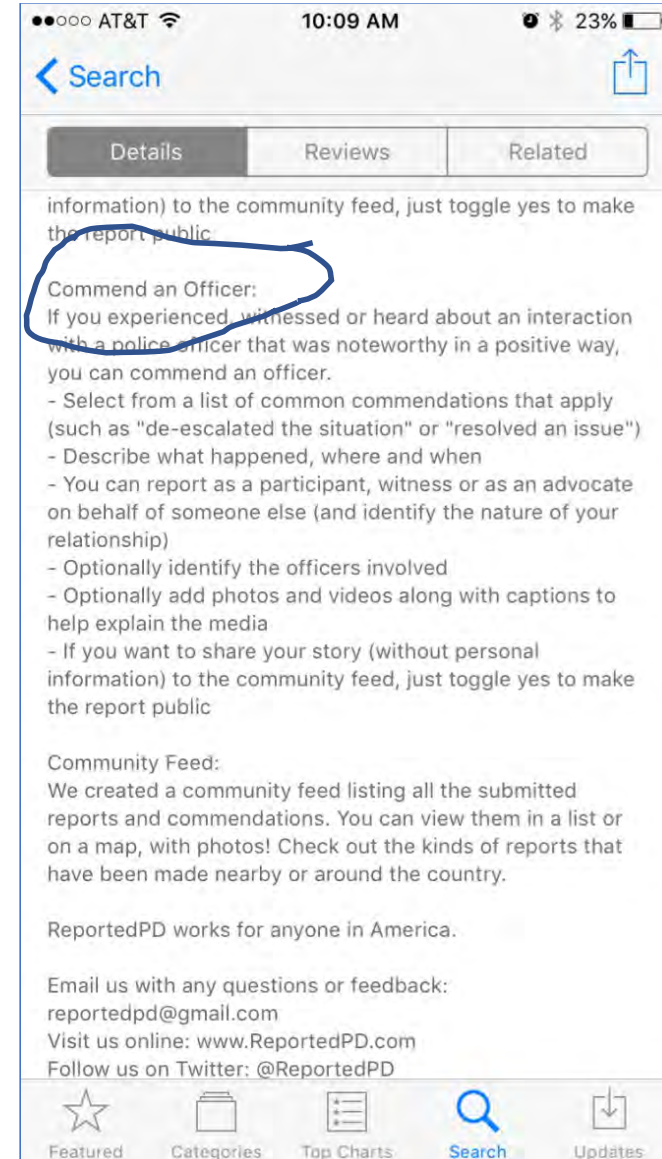
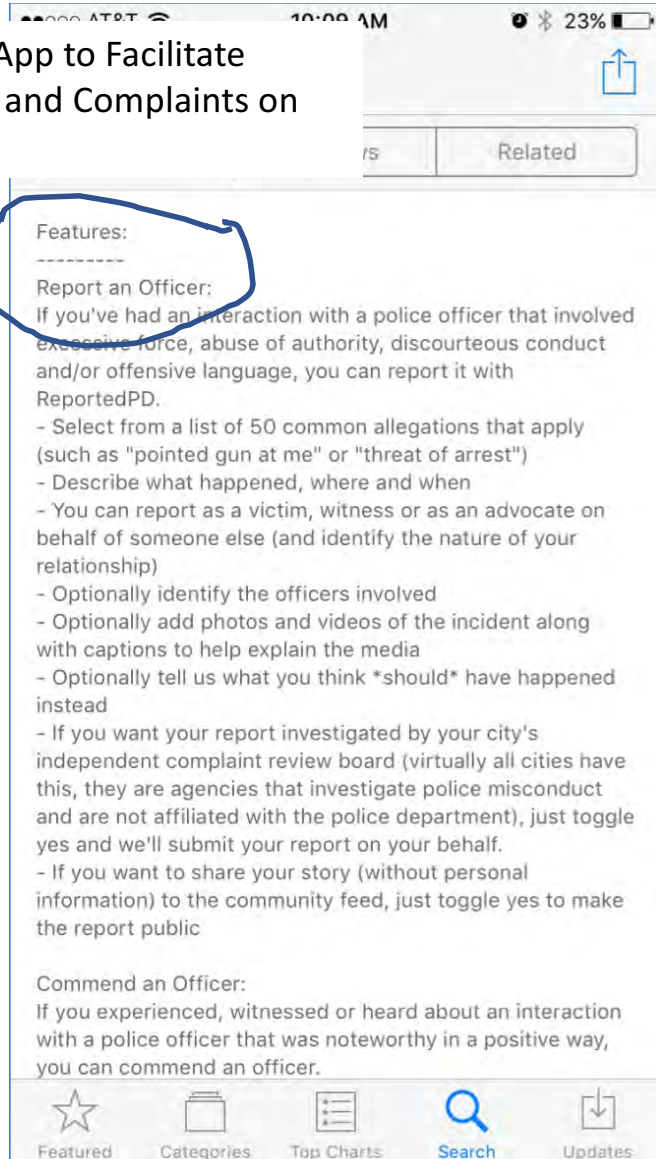
http://www.countyhealthrankings.org/sites/default/files/styles/resource_images/public/resources/2016CHRmodel.jpg?itok=RHMD1jfY



Healthy Public Logic Model



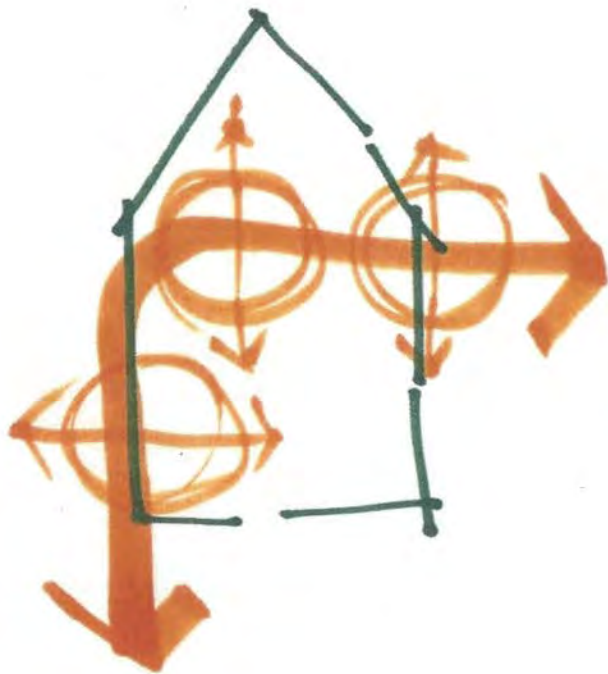
Reported PD: An App to Facilitate Public Comments and Complaints on Police Conduct



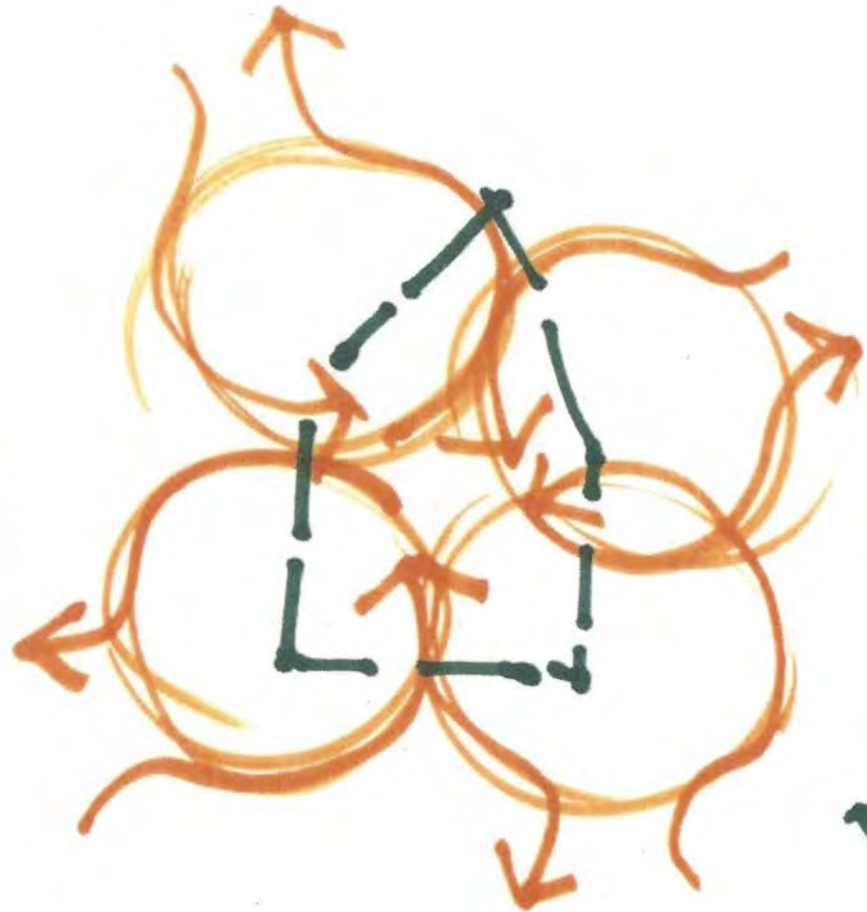








Orange on the Corridor
Infrastructure for the Next Social Compact, November 6, 2014



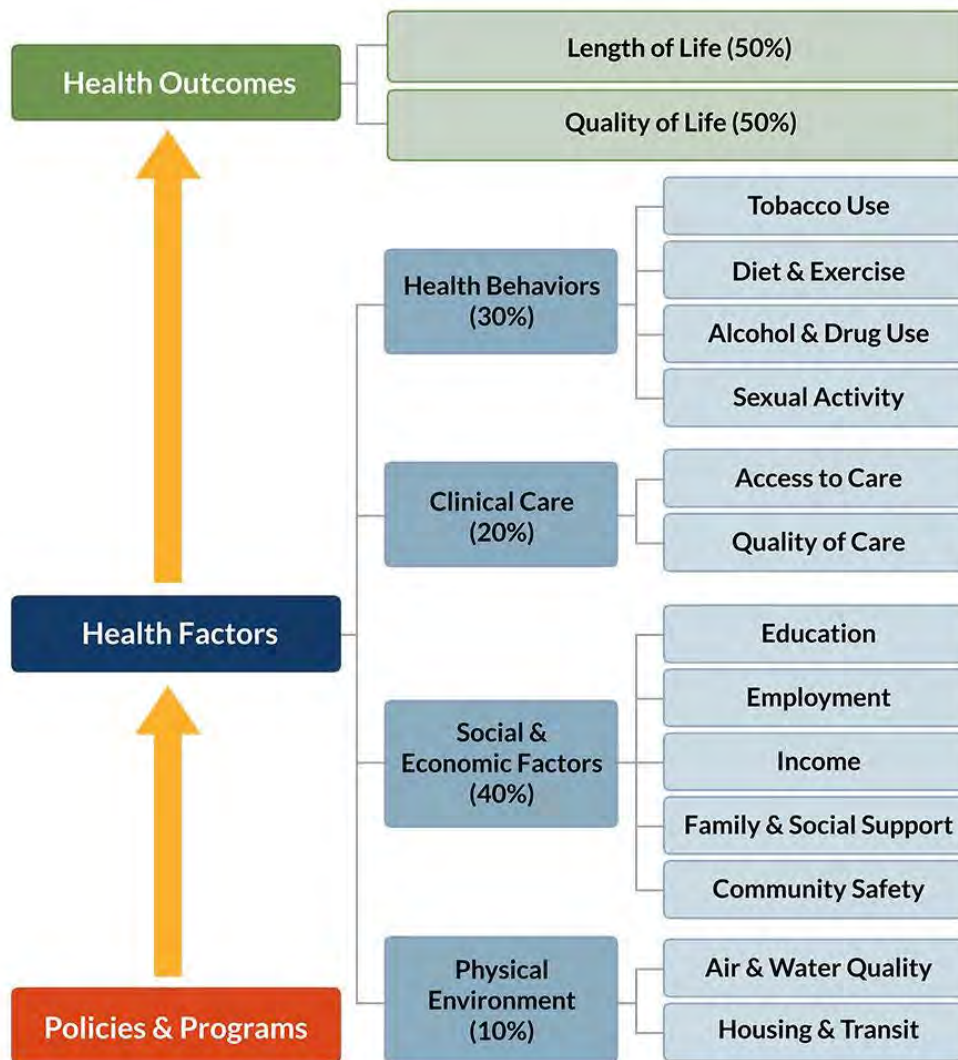
Orange as a hub



credit: Photo by Ashley Clarke
<http://streetsense.org/article/zoning-protest-midcity-brookland-manor-one-dc-grandfamilies/#.WNvPEXLyto6>

IRL meeting

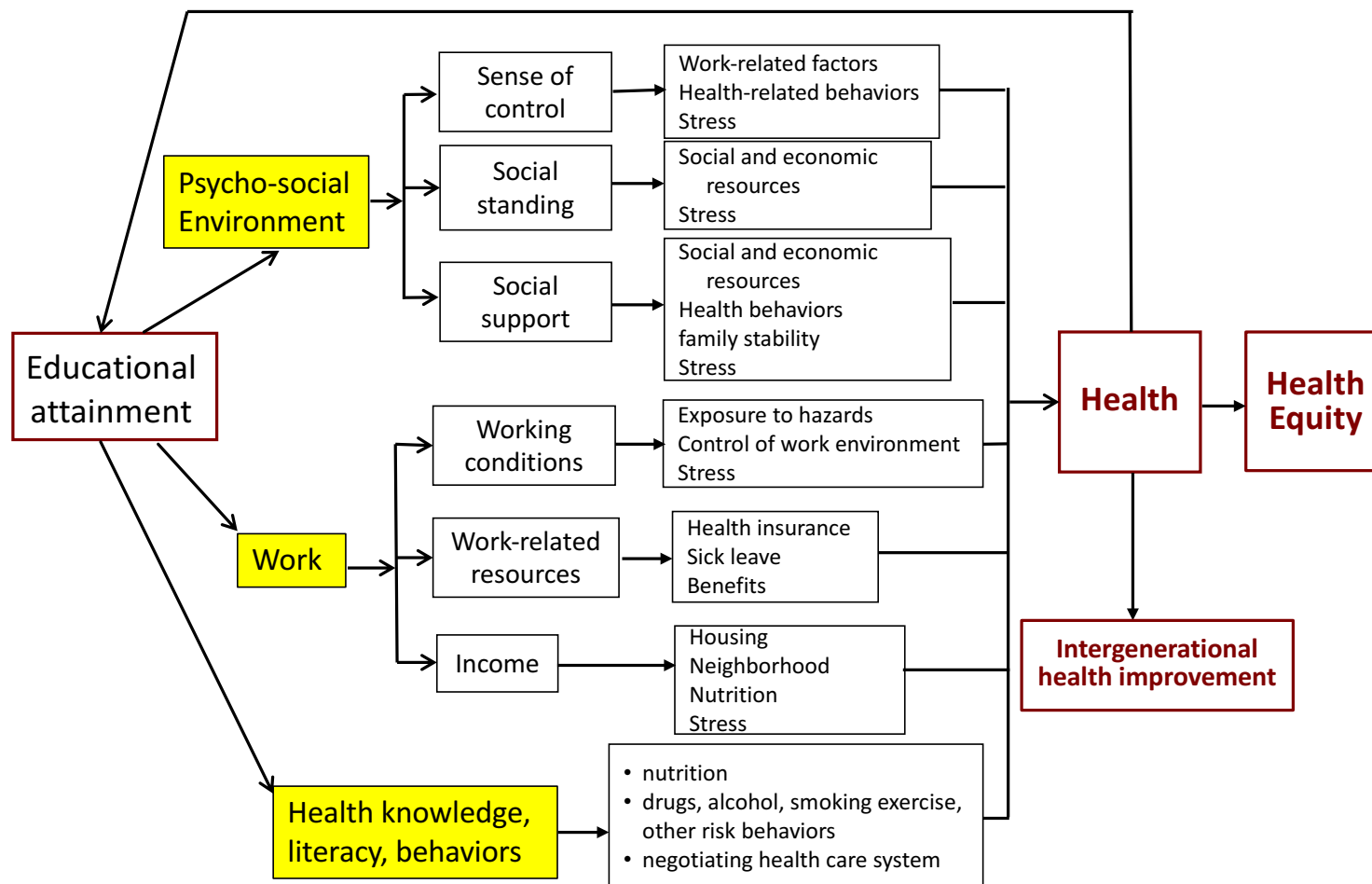
Most important: it was a surprise - not the same old research meeting - which I was dreading - and not the same old methods. They boldly put questions of / need for partnership on the table. Our team was very popular - not because of Derek or me but because Dominic is such a good organizer. Organizers were busy meeting with each other, learning how this could be useful to them.



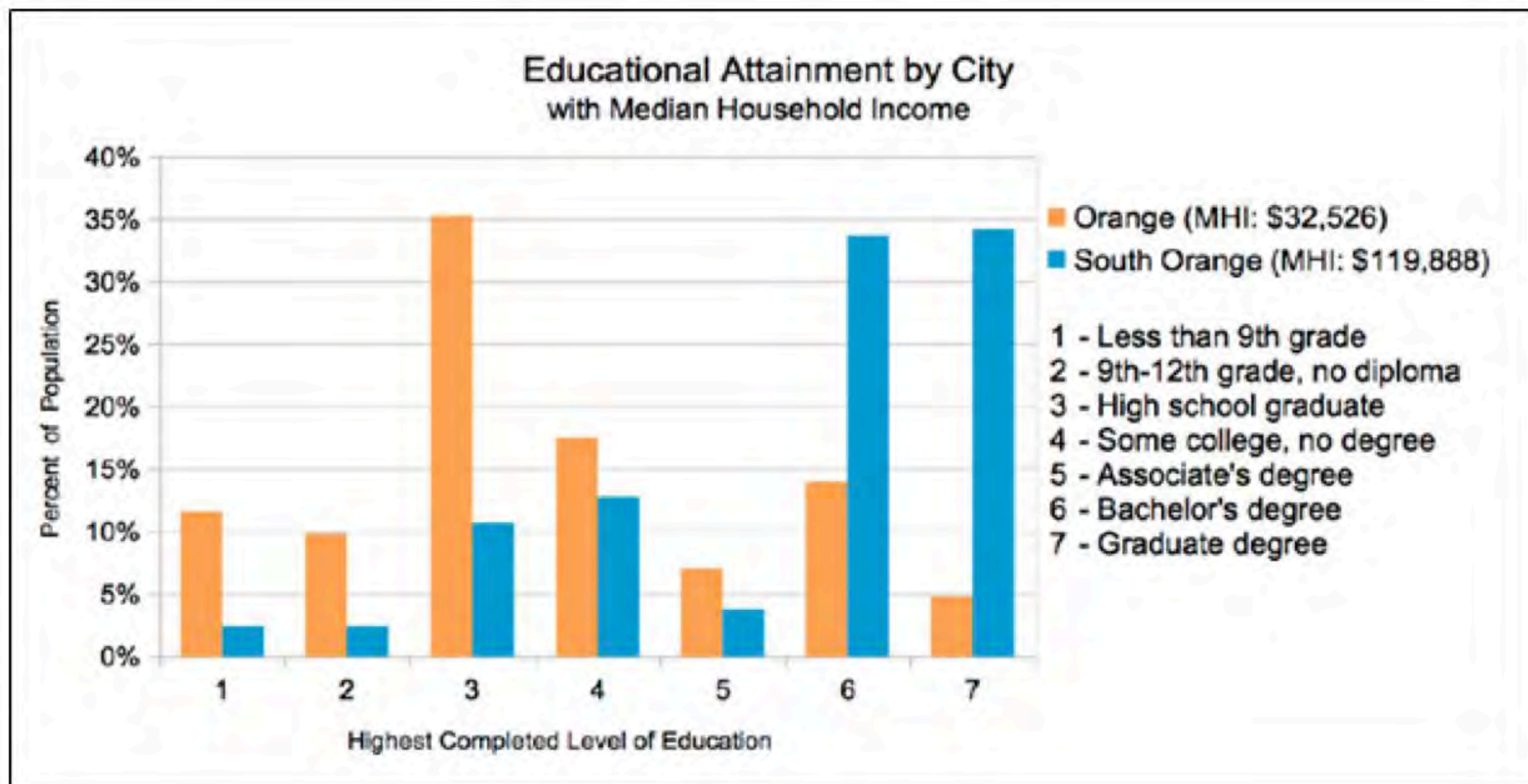
County Health Rankings model © 2016 UWPHI

http://www.countyhealthrankings.org/sites/default/files/styles/resource_images/public/resources/2016CHRmodel.jpg?itok=RHMD1jfY

Analytic Framework for Health Equity Education Reviews



EDUCATION ATTAINMENT & HEALTH



SWOT ANALYSIS

We conducted a SWOT Analysis and used Dot voting to prioritize issues.

Strengths

- Education Assets
- Cultural Diversity
- Existing Community Programs
- Orange's rich history

Weaknesses

- Political Environment Challenges
- Physical Environment shortcomings
- Communication Difficulties
- Weak Community Institutions

Opportunities

- Outside Institutional Interest
- Education Assets
- Desirable Location
- Passionate Orange community

Threats

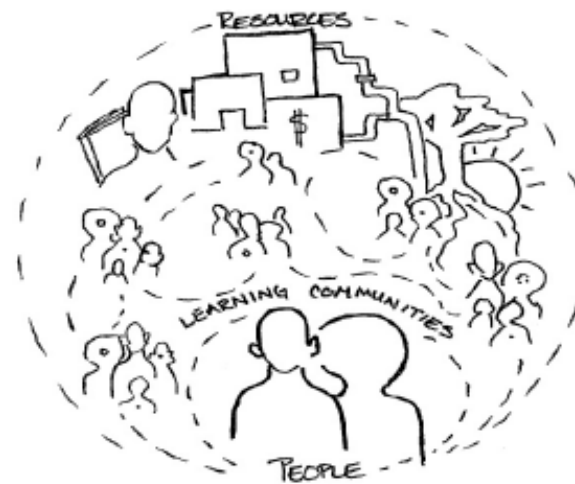
- Limited Community Engagement
- Displacement of Current Residents
- Violence

HEALTHY  ORANGE

In Orange, we have people, learning communities, and resources but these things exist in a fragmented state, in isolation or in conflict.



So the question becomes:



How do we connect
PEOPLE, LEARNING
COMMUNITIES,
& RESOURCES
?

match, can not be all in-kind

12 posts by June (2 per hashtag)

3/28/17

School Based

Electra

Nov 7

Events

- Amplifying Youth Voices Forum- April 1st
- Main Street Block Party - May 6th
- Music City Festival - May 20th
- NJHI Webinars & Symposium: Libraries as a Health Resource
 - Webinars: May 26th & 31st
 - Symposium: September 7th
- Oakwood Block Party- June 10th

sing