



WMC AMERICAN UNIVERSITY EAST CAMPUS
SITE PLAN RENDERING
05.13.2014

L01

American University East Campus June 26 Community Meeting

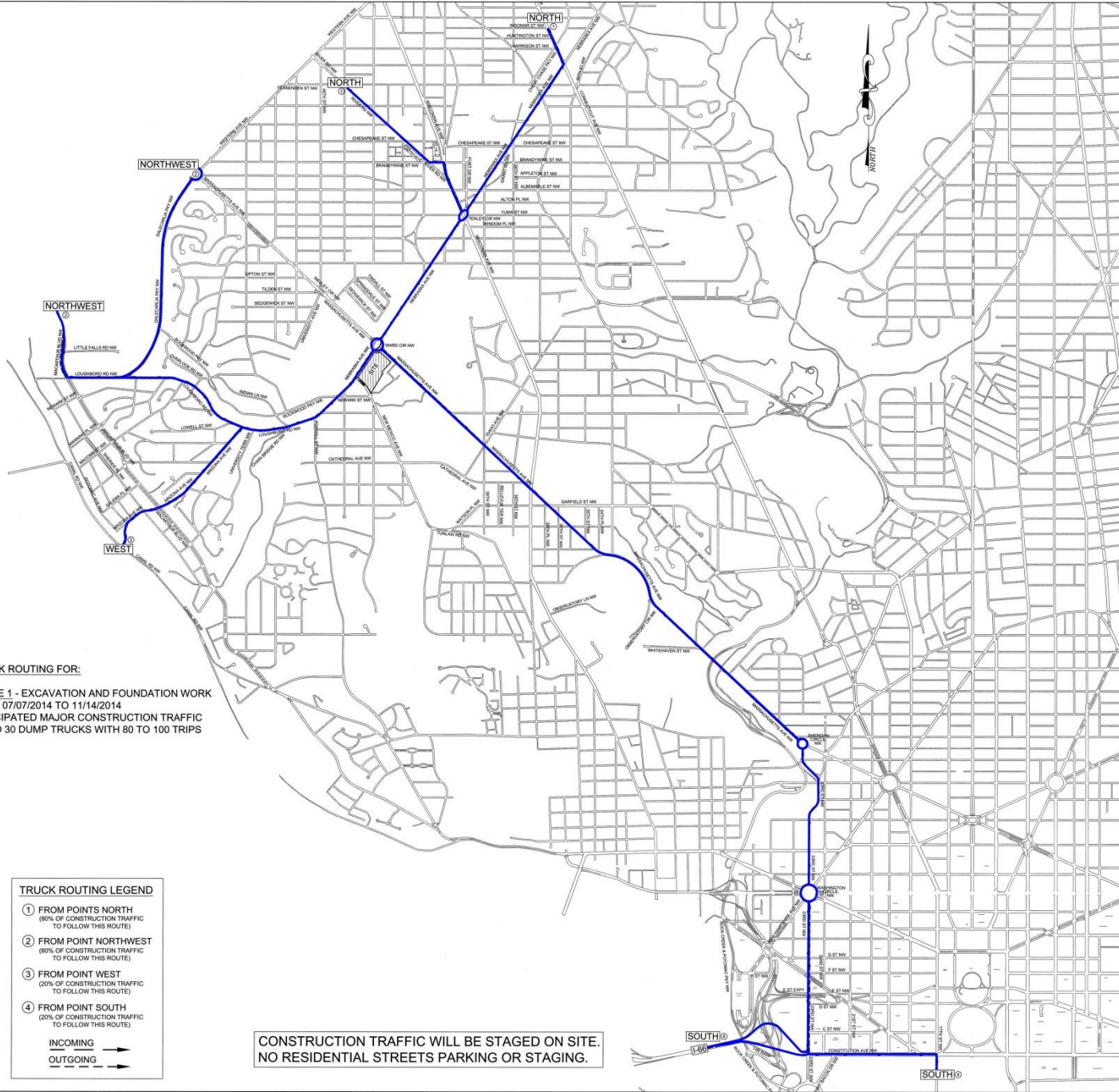
Agenda

- I. Trucking update (7:00 - 7:25)
- II. Landscaping update (7:25 - 7:45)
- III. Construction management update (7:45 - 8:15)
- IV. Follow-up from May 15 meeting (8:30 - 8:45)
- V. Q & A (8:45 - 9:00)

Trucking

**Phase I Trucking:
Excavation & Foundation Work
(July 2014 – November 2014)**

Approximately 20-30 dump trucks daily (80-100 trips)



TRUCK ROUTING FOR:
PHASE 1 - EXCAVATION AND FOUNDATION WORK
 FROM 07/07/2014 TO 11/14/2014
 ANTICIPATED MAJOR CONSTRUCTION TRAFFIC
 -20 TO 30 DUMP TRUCKS WITH 80 TO 100 TRIPS

TRUCK ROUTING LEGEND

- ① FROM POINTS NORTH
 (80% OF CONSTRUCTION TRAFFIC TO FOLLOW THIS ROUTE)
- ② FROM POINT NORTHWEST
 (80% OF CONSTRUCTION TRAFFIC TO FOLLOW THIS ROUTE)
- ③ FROM POINT WEST
 (20% OF CONSTRUCTION TRAFFIC TO FOLLOW THIS ROUTE)
- ④ FROM POINT SOUTH
 (20% OF CONSTRUCTION TRAFFIC TO FOLLOW THIS ROUTE)

INCOMING →
 OUTGOING ←

**CONSTRUCTION TRAFFIC WILL BE STAGED ON SITE.
 NO RESIDENTIAL STREETS PARKING OR STAGING.**



AMERICAN UNIVERSITY

AMERICAN UNIVERSITY EAST CAMPUS PROJECT

ADDRESS:
 3501 NEBRASKA AVENUE,
 N.W. WASHINGTON, DC.

No.	Date	Issue/Revision
Designed By:	S.P.T.	Drawn By:
Checked By:	M.L.L.	S.P.T.

Project No: 10-097 | Date: 06/16/14
 Scale: SCALE 1" = 750'

Sheet Title:
CONSTRUCTION TRUCK ROUTES

Proposed Trucking Routes

To / from points North (80%):

Nebraska → River

Nebraska → Connecticut

To / from points South (20%):

Massachusetts → 23rd → Constitution → I-66

Massachusetts → 23rd → Constitution → 17th

To / from points Northwest (80%):

Nebraska → Loughboro → Macarthur

Nebraska → Loughboro → Dalecarlia

To / from points West (20%):

Nebraska → Loughboro → Arizona → Canal

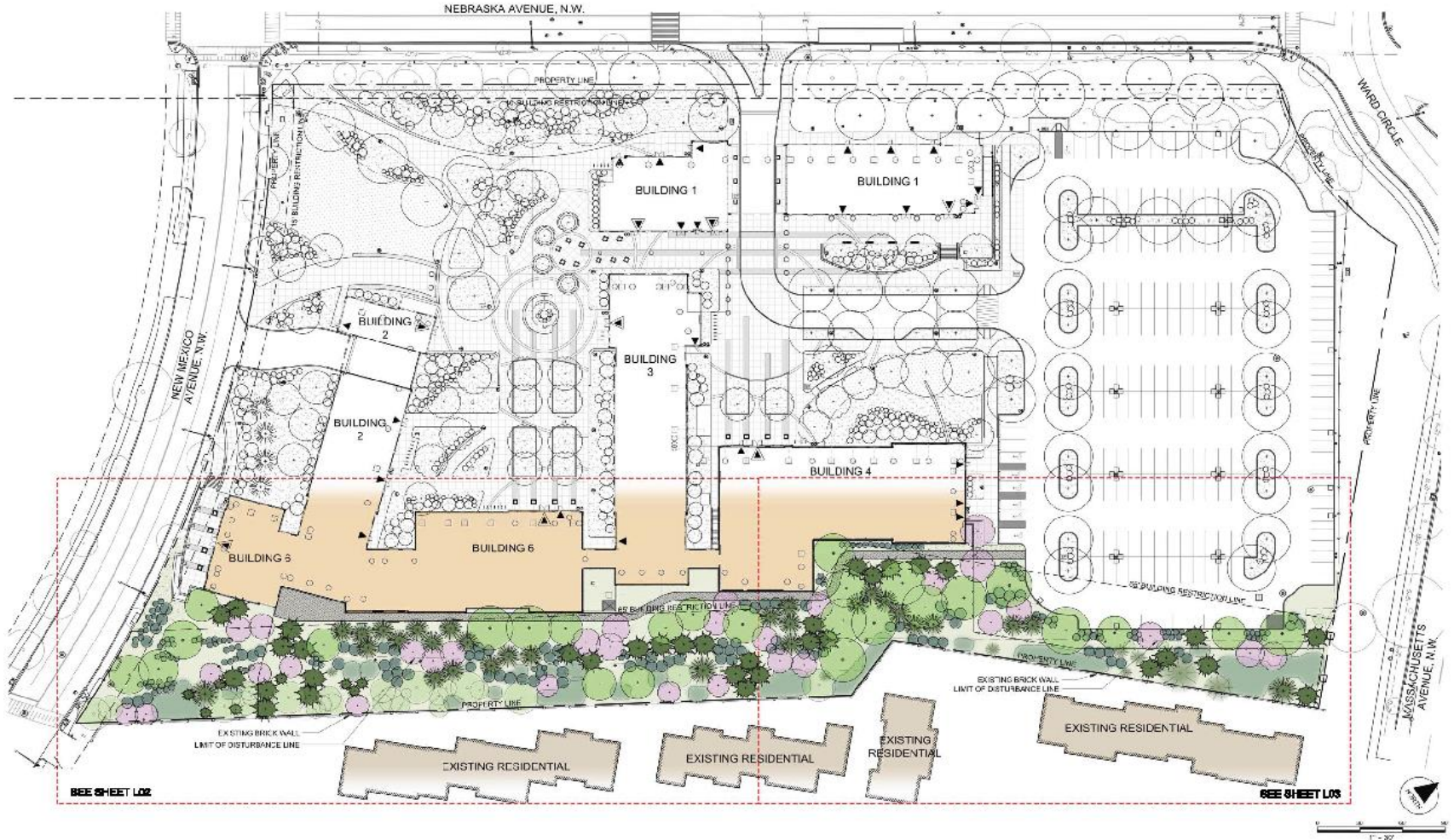
Trucking (continued)

- Site access at existing Nebraska & New Mexico Avenue curb cuts
- No truck traffic on neighborhood streets
- Flagmen at entrances
- Traffic control plan per DDOT
- Loading and unloading on site

Trucking: Monitoring & Enforcement

- Construction traffic will be staged on site. No trucks will park or queue on residential streets.
- Trucking hours to be determined by DDOT
- Vehicle tagging
- Contract language (zero tolerance)

Landscaping Update



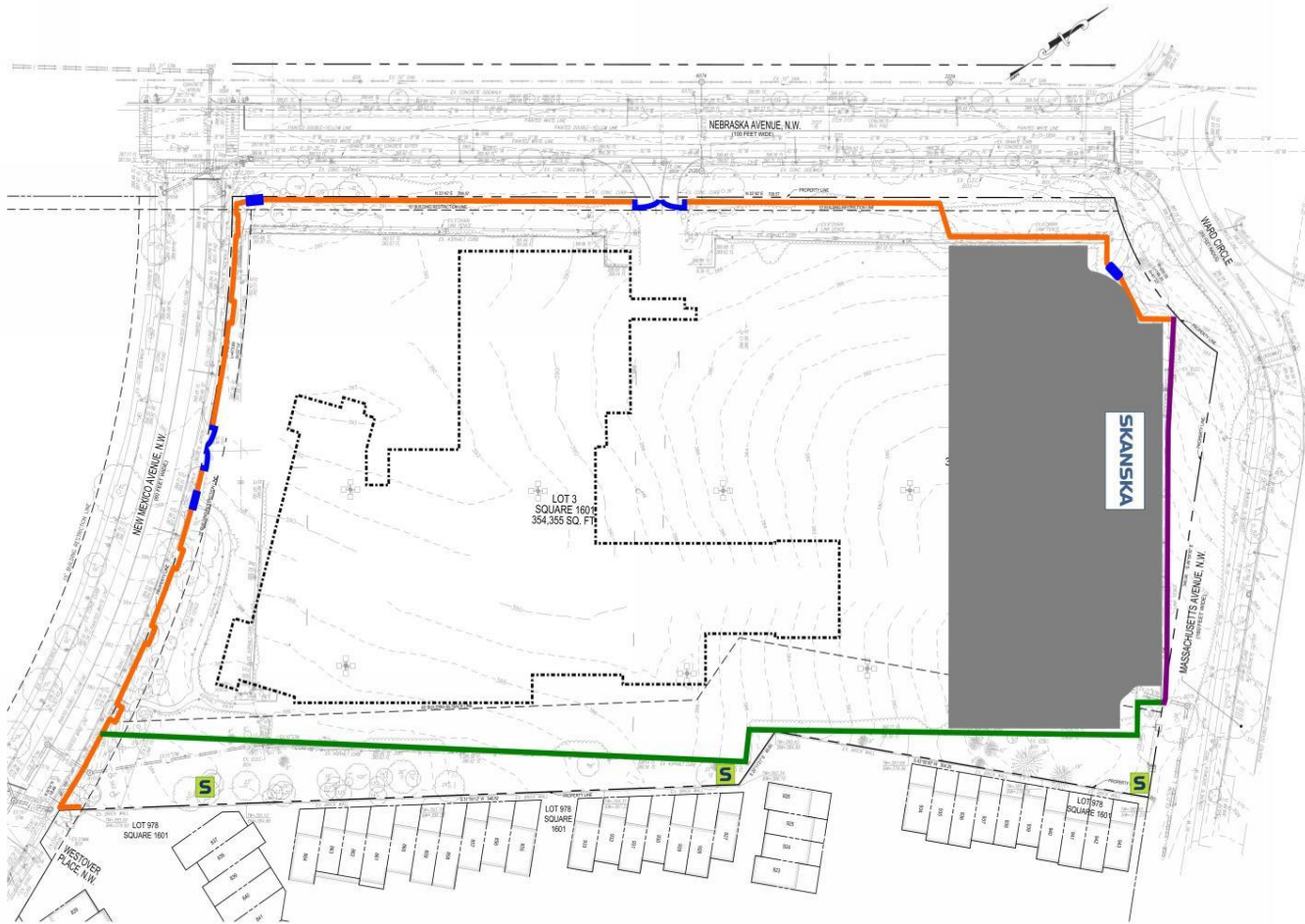
Landscaping Update

Current Activity:


- Landscape committee met on site June 17 with AU staff and reps from Bartlett Trees & landscape architect
- Relocating 23-25 trees into the buffer
- Protective fencing for existing buffer
- Updated plan indicating relocated trees in next few weeks

Future Activity:

- Next landscape committee meeting: mid-September
- Species selection & tagging, layout on site (spring 2016)



Legend

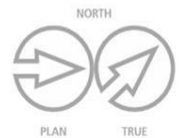
-  8-foot high Wooden Fence
-  Chain Link Fence with Netting
-  Existing 6-foot high Chain Link Fence
-  Wooden Man Gate
-  Swinging Gate with Netting
-  Construction Parking and Staging Area
-  Skanska Field Office
-  Skanska InSite Noise Monitoring Station
-  Below Grade Garage Footprint

American University
 East Campus: 3501 Nebraska Avenue, NW
 Washington, DC
 Date: June 25, 2014

Site Utilization Plan

Phase 1 - Demolition, Sheeting & Shoring, Excav Foundation, Parking Garage up to Grade Level

Anticipated Duration: July 2014 to March 2015
 Anticipated On-site Manpower: 10 to 50



Construction Management

Work hours

–Monday through Friday, 7:30 am – 4:00 pm

Construction parking

- No residential neighborhood street parking allowed
- Onsite parking for workers
- Carpooling and shuttling for construction workers
- Metro rail and bus, AU shuttle
- Use of underground garage when available

Construction Management

Site protection

- Fully fenced site with locked construction gates
- Mesh on fence
- Safety/informational signage
- Tree protection and preservation

Sidewalks and crosswalks

- Controlled sidewalk closure near construction entrances
- All crosswalks remain open

American University East Campus Project
Construction Phases with Anticipated Major Traffic and Manpower

Phase	Approximate Duration	Anticipated Daily Major Traffic	Anticipated Manpower
Excavation	July 2014 - Nov. 2014	20 - 30 Dump Trucks (80 - 100 Trips)	10 to 30
Foundation	Sep. 2014 - Dec. 2014	20 - 30 Dump Trucks (80 - 100 Trips)	10 to 30
Foundation to grade	Nov. 2014 - March 2015	10 - 15 Concrete Trucks (20 - 40 Trips)	30 to 50
Above grade structure	Feb. 2015 - Nov. 2015	10 - 15 Concrete Trucks (20 - 40 Trips)	70 to 100
Exterior skin	Aug. 2015 - Dec. 2015	3 - 5 Flat Bed Trucks	10 to 20
Interior Finishes (Drywall, MEP, Prefab etc.)	April 2015 - April 2016	8 - 15 Trucks	90 to 130
Landscape and Hardscape	Nov. 2015 - April 2016	10 - 20 Dump Trucks (20 - 40 Trips)	20 to 40

- Worker parking on site
- Monitored by AU Public Safety
- Zero tolerance policy for neighborhood parking

Construction Management

Dust, debris and pest control

- Dust control measures
- Street cleaning
- Control of wind-blown debris
- Monitoring of job site perimeter, sidewalks and streets
- Pest control measures

Skanska Onsite Team



David Coleman
Project Executive



Elias Bezabhe
Project Manager



Steve Griffin
Assistant Superintendent



Jim Collison
Superintendent

24-Hour Contact
301-704-9176
AUEC@skanska.com

American University Team

Andrew Huff

Director of Community Relations

202.440.2221

ahuff@american.edu

Robert van Hoek

Senior Project Manager

202.345.7160

vanhoek@american.edu

Onyel Bhola

Project Coordinator

240.565.7707

onyel@american.edu

**American University
Public Safety
202-885-2527**

Q & A