



Politics, Policy, and Law Scholars (Three-year scholars program)

SAMPLE PPL COURSES

Introduction to Law (JLC 101)

A general introduction to law and the legal system, including a survey of substantive law in both civil and criminal arenas. Students learn how the legal system operates and the basic categories of law, and discuss controversial issues in each area of law.

American Constitution (SPA 220)

This course focuses on the major aspects of American constitutional law and development: the separation of powers in the American political system; the distribution of power between the federal government and the states; government power to regulate economic and property interests; and development of civil rights and liberties. Some of the most important decisions the Supreme Court has made across the spectrum of constitutional law are examined, and the relationship between law, politics, and society is also explored.

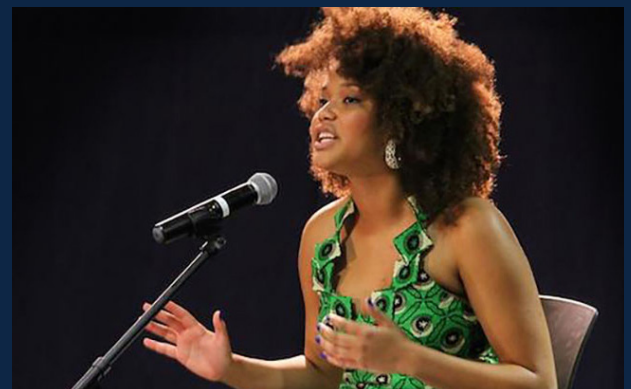
Introduction to Political Research (GOVT 310)

An introduction to political science research, including the logic of analysis, research design, and the basics of quantitative analysis. Application of gathering data and of analytic and statistical techniques to contemporary political problems.

Justice and Public Policy (JLC 309)

Examines current basic national, state, and local policy issues that affect the definition of crime and shape public agency responses toward crime. The objective of the course is to sharpen and improve the student's policy-oriented thinking about crime in a constitutional democracy and to develop a method to evaluate policy related to crime.

SPA's innovative **Politics, Policy, and Law Scholars Program (PPL)** is designed for exceptional undergraduates to earn a degree in three years while living and studying with students who share similar interests and a common focus on academic and professional achievement. PPL students work closely with SPA faculty who teach and publish in the areas of politics, policy, government, and law. They are part of a rigorous program that provides them with the tools to make great impact through action and knowledge.



Clare Verbeten, SPA/PPL '15, is passionate about bringing positive change to the world.



Kyle Anderson (PPL '16) interned with the Washington Metropolitan Area Transit Authority (WMATA) which lead to his job as a Public Information Officer for the Virginia Department of Transportation.

STUDY ABROAD OPPORTUNITIES

- Students may study abroad in the first summer or the fall of the third year.
- Some popular study abroad destinations are
 - » Australia » Belgium » Denmark » England
 - » Ireland » Italy » New Zealand » Scotland
- The number of study abroad credits accepted into the major will vary. Students should work with their academic advisor to discuss individual programs.
- It is strongly recommended that students complete the majority of their university requirements before studying abroad

INTERNSHIP OPPORTUNITIES

- Students can earn up to 12 credits from internships toward their degree.
- PPL requires an internship be completed as a major requirement.
- Students must meet course prerequisites, have junior class standing, complete a pre-requisite course, have departmental permission, and a minimum 2.5 GPA before registering an internship for credit.
- Sample internships include:
 - » Brookings Institution » Center for Education Reform
 - » Human Rights Campaign » The White House

SCHOLARLY RESEARCH OPPORTUNITIES

- Take a Research Methods course.
- Students learn research design, quantitative analysis, and how to apply analytical and statistical techniques to contemporary problems.
- Students have opportunities to work with faculty mentors on their original research projects.
- Students can present their original research through research symposiums on campus or at national conferences.

AT A GLANCE

- » Built in additional cohort-based labs for experiential learning.
- » Two dedicated faculty members for the program - Director and Faculty Advisor.
- » Incoming PPL students are matched with an upper-class PPL mentor.
- » Upper-class Program Assistant (PA) who helps bridge in class and out of class experiences and providing support by attending labs and living with PPL students.
- » Community-building initiatives throughout the course of the program.

QUESTIONS?

CONTACT

Justin Williams,
Assistant Director of Undergraduate
Recruitment & Retention

PHONE

202-885-6200

EMAIL

aupublicaffairs@american.edu

TWITTER

AUjwilliams